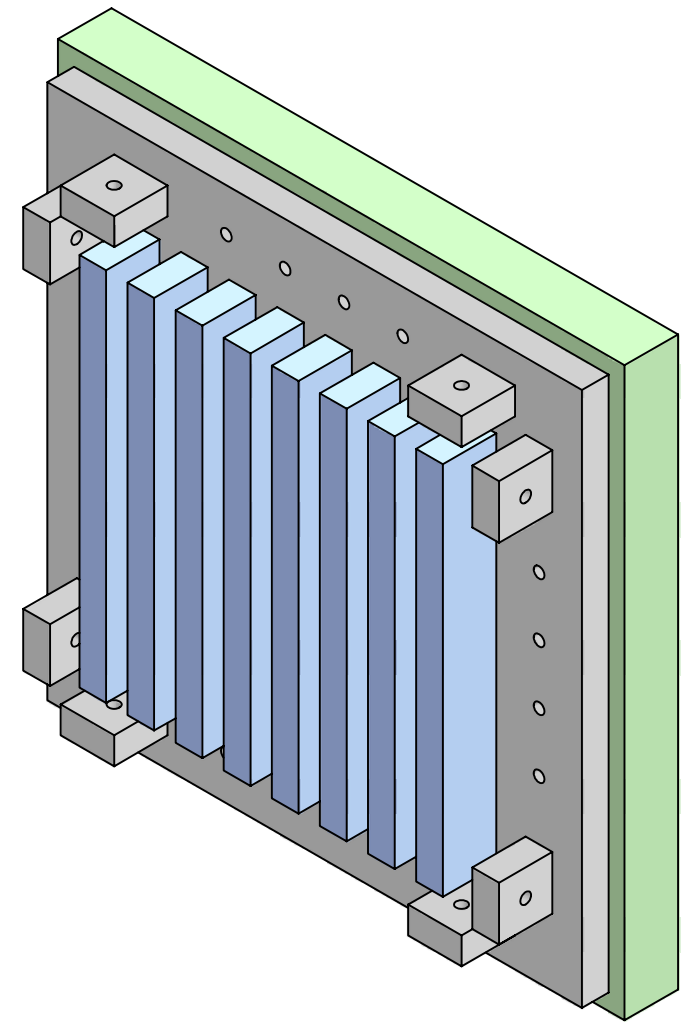
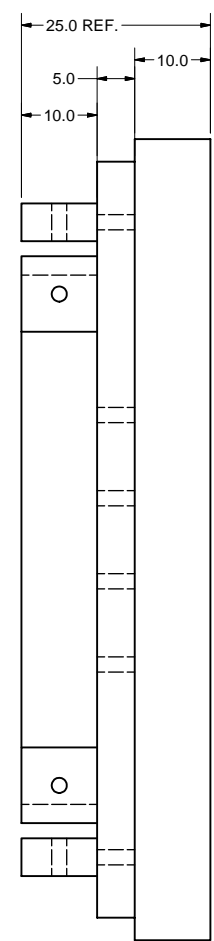
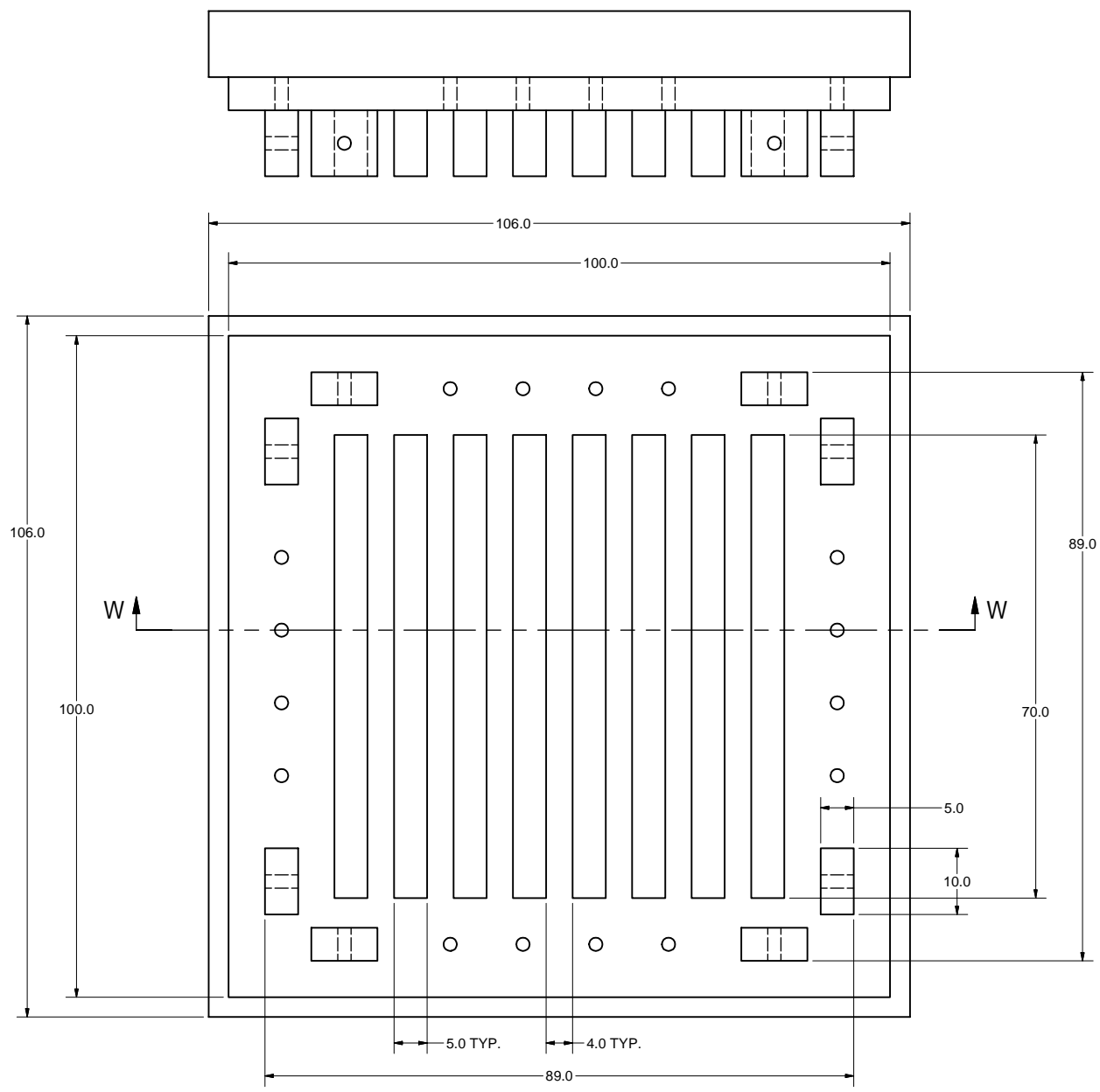
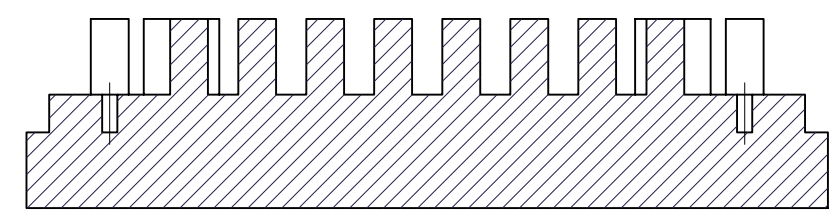


REVISIONS			
SYM.	ZONE	DESCRIPTION	DATE APP.



SCALE 2 : 1



SECTION W-W
SCALE 2 : 1

6 ENDPLATE DETECTOR MODULE 1
 FILE NAME: 6080-014
 SHEET NO.: 9
 DFT. SCALE: 2:1
 MATERIAL: PROTOTYPE SHAPE ONLY
 QTY: AS NEEDED
 NOTES:

FOR MACHINING LUBRICANT USE ONLY
 ALKALINE DETERGENT LUBRICANT CIMSTAR 40
 OR EQUIVALENT APPROVED BY CORNELL LEPP

ITEM	DWG. NO.	DESCRIPTION	QUANTITY			REMARKS	REV.	
			G1	G2	G3			
D	PRINT DISTR.	PLOT DATE: 4/5/2006 CAD FILE NAME: 6080-014.idw						
6080-014 SH. NO. 9 CR. 9	CR-1	UNLESS OTHERWISE SPECIFIED: DIMENSIONS ARE IN INCHES: TOLERANCES ON: .00 ± .010 .000 ± .005 FRACTIONS ± 1/64 ANGLES ± 0.5° ALL SURFACES				CORNELL UNIVERSITY Floyd R. Newman Laboratory Ithaca, NY 14853		
		Linear Collider R&D, TPC Large Prototype Endplate Detector Module 1, Detail						
REV.	CHECKED BY:	DRAWN BY	DRAWN FOR	DATE	SCALE			
	APPROVED BY:	TMK	DPP	4/4/2006	D	6080-014 SH. NO. 9 OF 9	REV.	