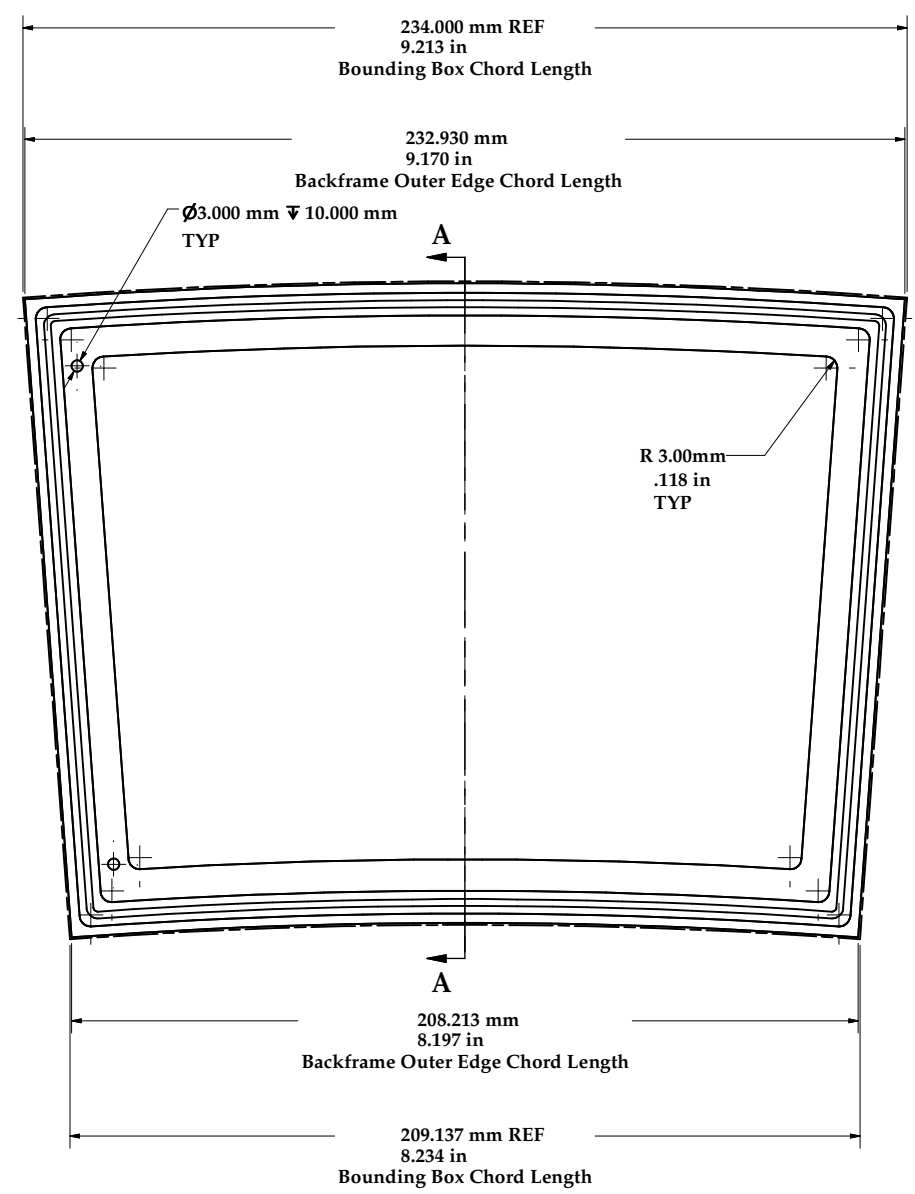
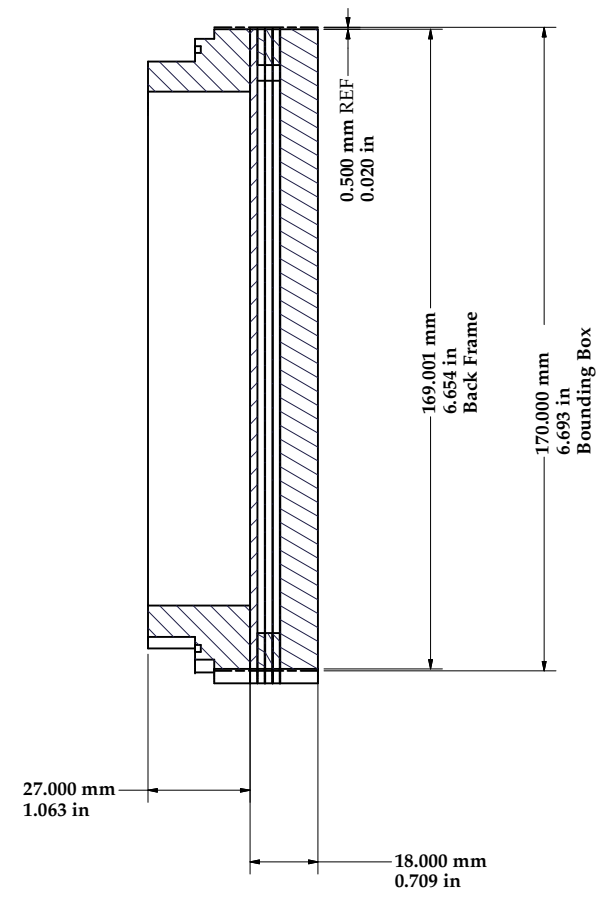


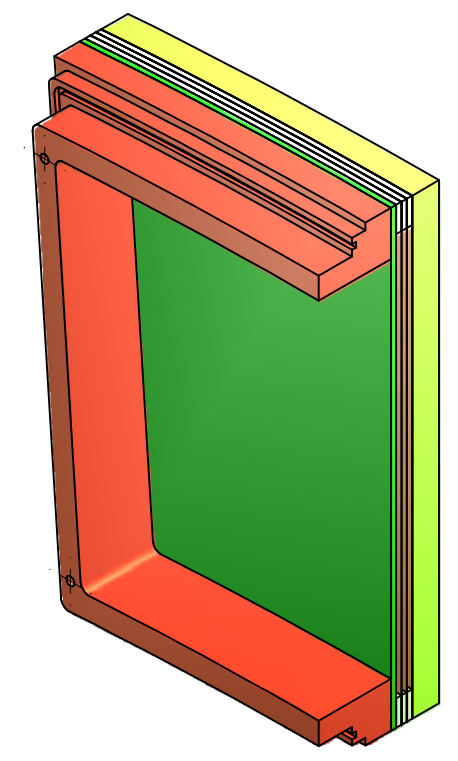
REVISIONS				
SYM.	ZONE	DESCRIPTION	DATE	APP.



SCALE 1 : 1



SECTION A-A
SCALE 1 : 1



SCALE 1 : 1

- 1 6080-103 3 GEM Module Assm
- FILE NAME: 6080-103
SHEET NO.: 1
DFT. SCALE: Noted
MATERIAL: NOTED
QTY: 7
NOTES:

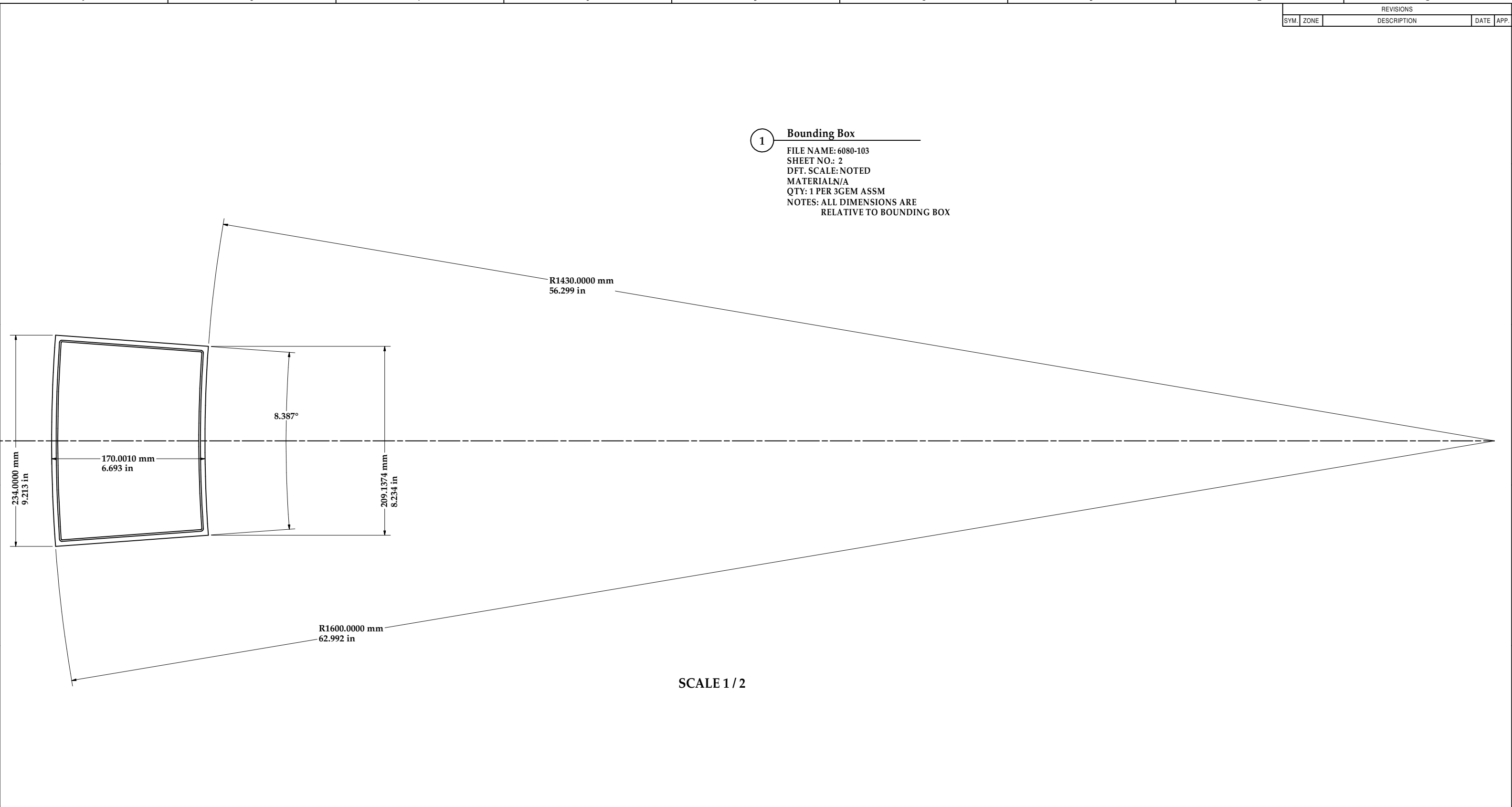
FOR MACHINING LUBRICANT USE ONLY
ALKALINE DETERGENT LUBRICANT CIMSTAR 40
OR EQUIVALENT APPROVED BY CORNELL LEPP

TECHNICAL RESOURCE APPROVALS REQUIRED BEFORE FABRICATION			
	OK	DATE	N/A
DRAFTING (O'Connell):			
MACHINE SHOP (Kaminski):			
CHEMISTRY (Conklin):			
ELECTRONICS SHOP (Barley):			
FURNACE BRAZING (Sherwood):			
BEAM WELDING (Sears):			
WELDING OTHER (Gallagher):			
UTILITIES INTEGRATION (Gallagher):			
STOCKROOMS (Lockwood):			

ITEM	DWG. NO.	DESCRIPTION	G1	G2	G3	REMARKS	REV.
			QUANTITY				
PRINT DISTR. PLOT DATE: CAD FILE NAME: 6080-103 3GEM.idw							
UNLESS OTHERWISE SPECIFIED: DIMENSIONS ARE IN INCHES: TOLERANCES ON: .00 ± .010 .000 ± .005 FRACTIONS ± 1/64 ANGLES ± 0.5° ALL SURFACES ∇							
6080-103 SH. NO. 1 OF 10 REV.		CORNELL UNIVERSITY Floyd R. Newman Laboratory Ithaca, NY 14853		3GEM Module Assm			
CHECKED BY: Peterson APPROVED BY: Peterson		DRAWN BY: MDS	DRAWN FOR: Peterson	DATE: 4/16/2007	SCALE: Noted	D	6080-103 SH. NO. 1 OF 10

REVISIONS			
SYM.	ZONE	DESCRIPTION	DATE APP.

1 Bounding Box
 FILE NAME: 6080-103
 SHEET NO.: 2
 DFT. SCALE: NOTED
 MATERIAL: N/A
 QTY: 1 PER 3GEM ASSM
 NOTES: ALL DIMENSIONS ARE
 RELATIVE TO BOUNDING BOX



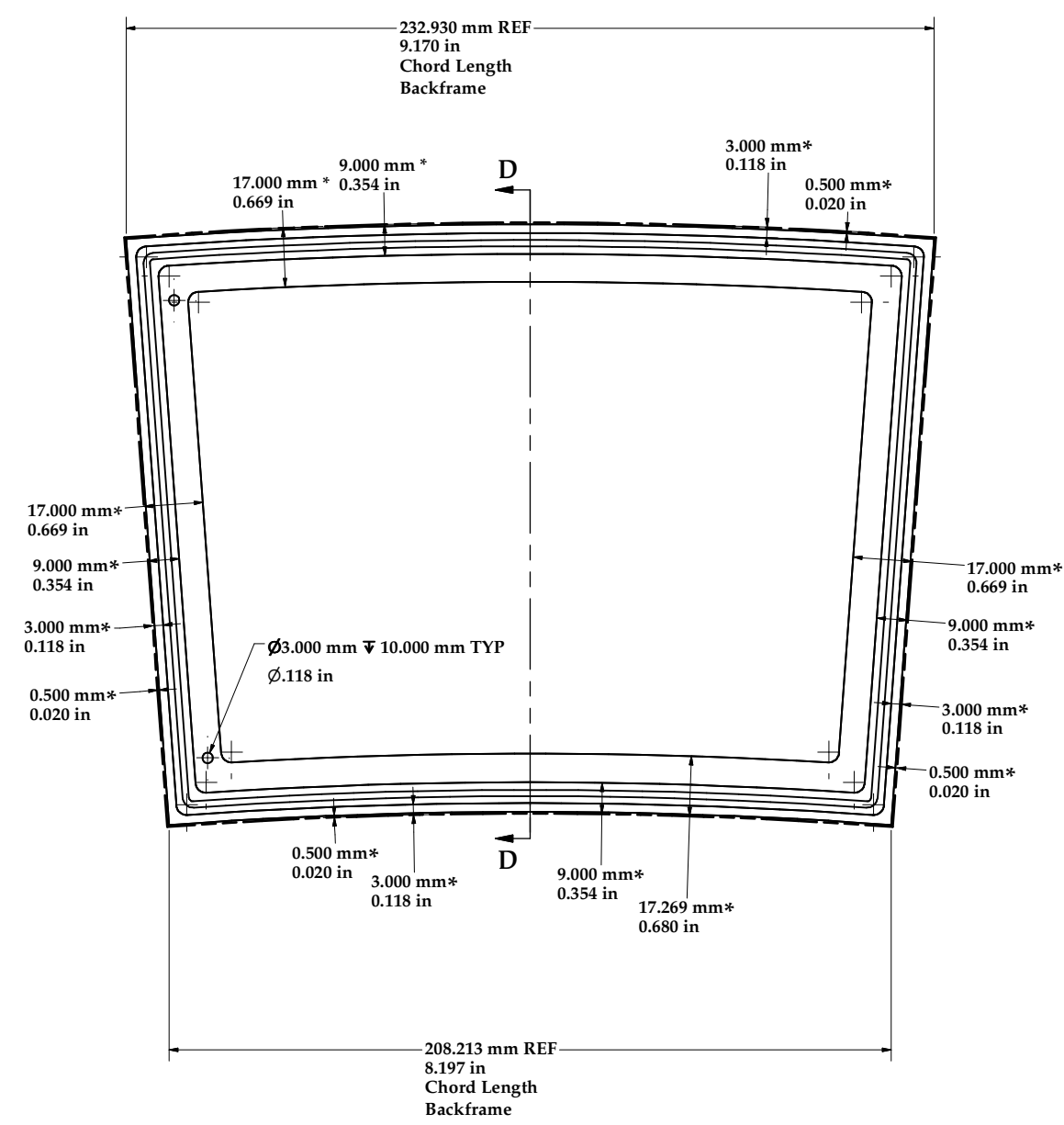
SCALE 1 / 2

FOR MACHINING LUBRICANT USE ONLY
 ALKALINE DETERGENT LUBRICANT CIMSTAR 40
 OR EQUIVALENT APPROVED BY CORNELL LEPP

TECHNICAL RESOURCE APPROVALS REQUIRED BEFORE FABRICATION			
	OK	DATE	N/A
DRAFTING (O'Connell):			
MACHINE SHOP (Kaminski):			
CHEMISTRY (Conklin):			
ELECTRONICS SHOP (Barley):			
FURNACE BRAZING (Sherwood):			
BEAM WELDING (Sears):			
WELDING OTHER (Gallagher):			
UTILITIES INTEGRATION (Gallagher):			
STOCKROOMS (Lockwood):			

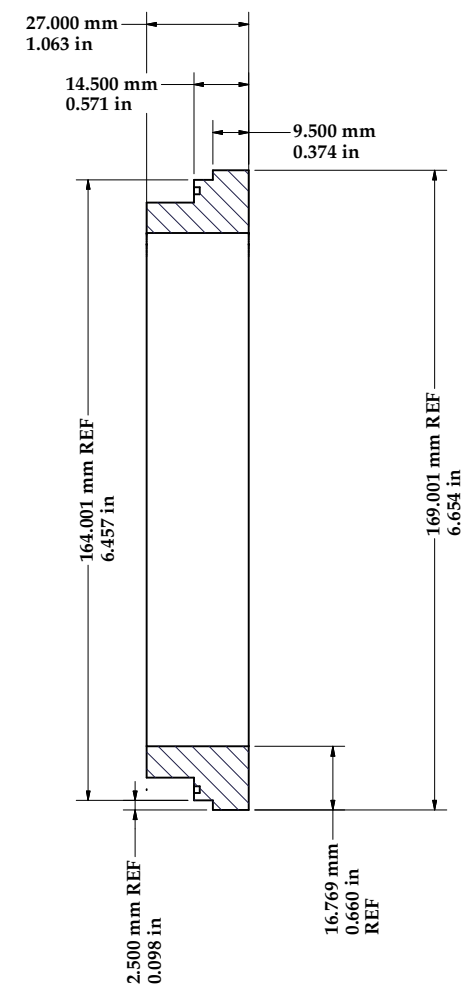
ITEM	DWG. NO.	DESCRIPTION	G1	G2	G3	REMARKS	REV.
			QUANTITY				
PRINT DISTR. PLOT DATE: CAD FILE NAME: 6080-103 3GEM.idw							
UNLESS OTHERWISE SPECIFIED: DIMENSIONS ARE IN INCHES: TOLERANCES ON: .00 ± .010 .000 ± .005 FRACTIONS ± 1/64 ANGLES ± 0.5° ALL SURFACES ✓			CORNELL UNIVERSITY Floyd R. Newman Laboratory Ithaca, NY 14853				
3GEM Module Assm			CORNELL UNIVERSITY Floyd R. Newman Laboratory Ithaca, NY 14853				
CHECKED BY: Peterson APPROVED BY: Peterson	DRAWN BY: MDS	DRAWN FOR: Peterson	DATE: 4/16/2007	SCALE: NOTED	D	6080-103 SH. NO. 2 OF 10	REV.

REVISIONS				
SYM.	ZONE	DESCRIPTION	DATE	APP.

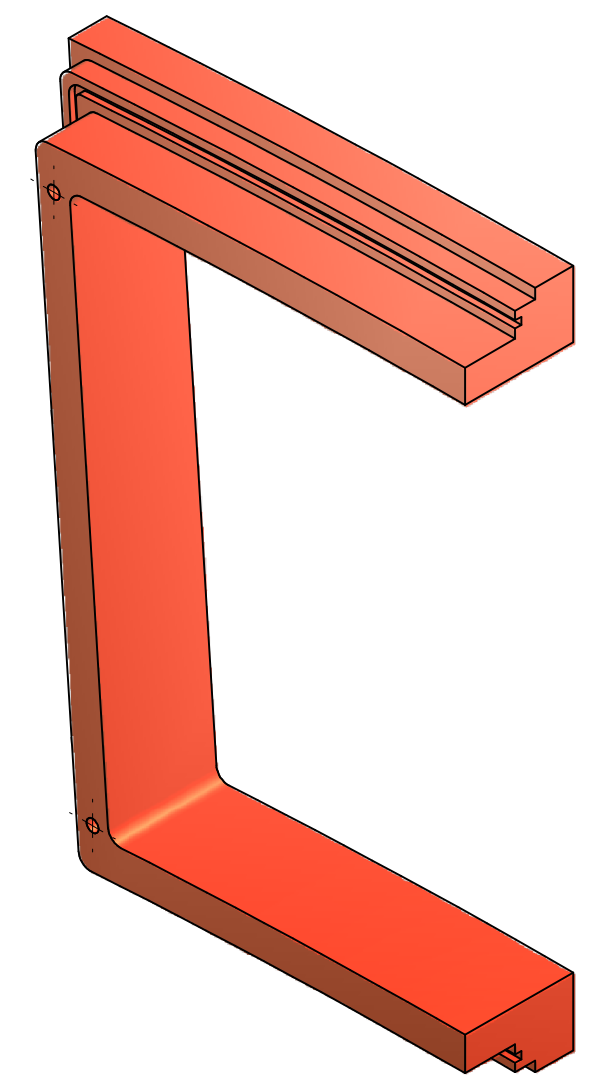


* SEE NOTE 1

SCALE 1:1



SECTION D-D
SCALE 1:1



SCALE 1.5:1

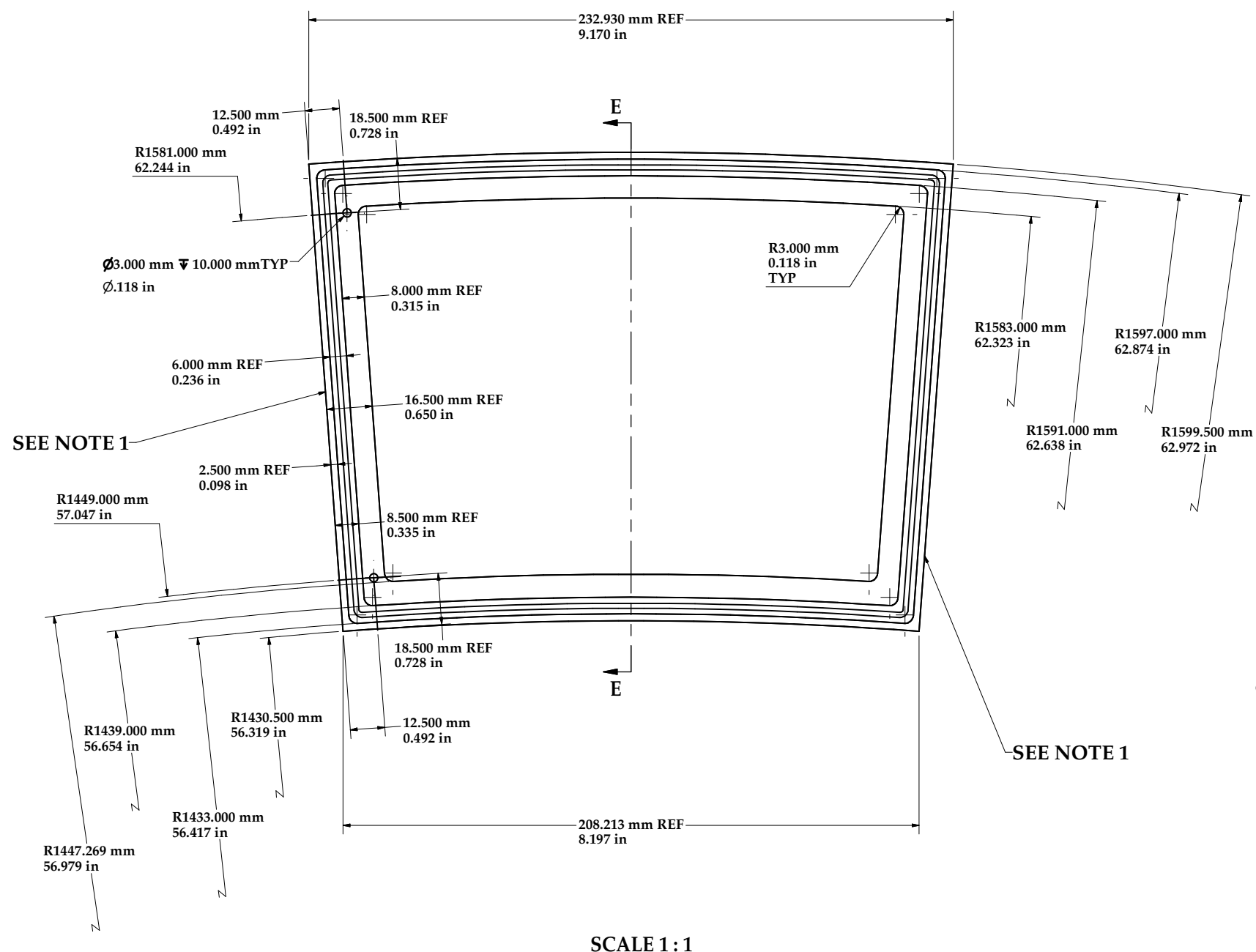
2 Backframe
 FILE NAME: 6080-103
 SHEET NO.: 3
 DFT. SCALE: Noted
 MATERIAL: 6061-T6 Alum.
 QTY: 7
 NOTES: *All Dimensions Are Relative From the Bounding Box

FOR MACHINING LUBRICANT USE ONLY
 ALKALINE DETERGENT LUBRICANT CIMSTAR 40
 OR EQUIVALENT APPROVED BY CORNELL LEPP

TECHNICAL RESOURCE APPROVALS REQUIRED BEFORE FABRICATION			
	OK	DATE	N/A
DRAFTING (O'Connell):			
MACHINE SHOP (Kaminski):			
CHEMISTRY (Conklin):			
ELECTRONICS SHOP (Barley):			
FURNACE BRAZING (Sherwood):			
BEAM WELDING (Sears):			
WELDING OTHER (Gallagher):			
UTILITIES INTEGRATION (Gallagher):			
STOCKROOMS (Lockwood):			

ITEM	DWG. NO.	DESCRIPTION	G1	G2	G3	REMARKS	REV.
			QUANTITY				
PRINT DISTR.							
D		PLOT DATE: CAD FILE NAME: 6080-103 3GEM.idw					
6080-103 SH. NO. 3 OF 10		UNLESS OTHERWISE SPECIFIED: DIMENSIONS ARE IN INCHES: TOLERANCES ON: .00 ± .010 .000 ± .005 FRACTIONS ± 1/64 ANGLES ± 0.5° ALL SURFACES ∇		CORNELL UNIVERSITY Floyd R. Newman Laboratory Ithaca, NY 14853			
3GEM Module Assm		CHECKED BY: Peterson APPROVED BY: Peterson		DRAWN BY: MDS DRAWN FOR: Peterson		DATE: 4/16/2007 SCALE: Noted D	
		6080-103 SH. NO. 3 OF 10					

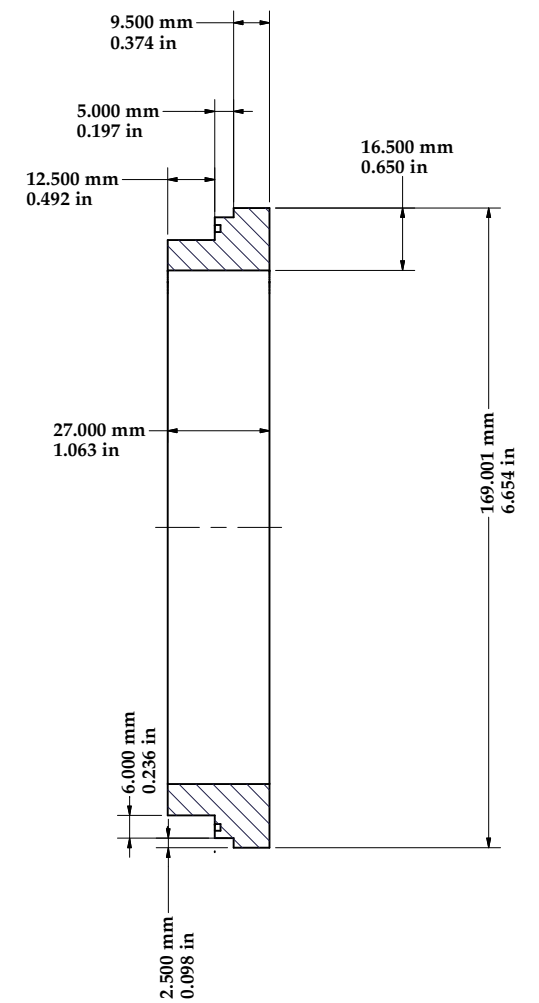
REVISIONS				
SYM.	ZONE	DESCRIPTION	DATE	APP.



SEE NOTE 1

SEE NOTE 1

SCALE 1:1



SECTION E-E
SCALE 1:1

- 2 6080-103 Backframe**
 FILE NAME: 6080-103
 SHEET NO.: 4
 DFT. SCALE: Noted
 MATERIAL: 6061-T6 Alum.
 QTY: 7
 NOTES: These Edges Do Not Point To Origin
 The Bounding Box Points To The Origin

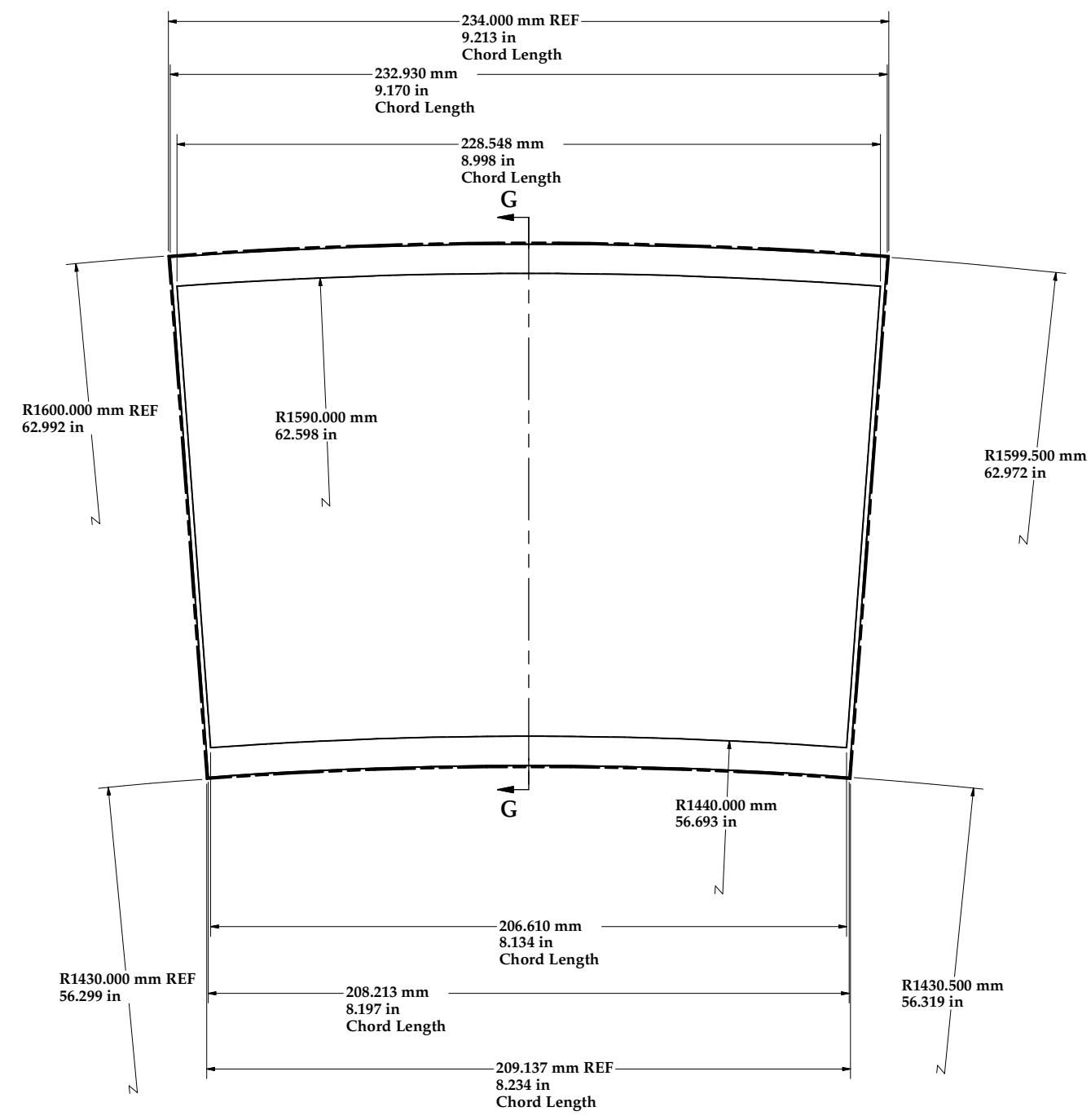
FOR MACHINING LUBRICANT USE ONLY
 ALKALINE DETERGENT LUBRICANT CIMSTAR 40
 OR EQUIVALENT APPROVED BY CORNELL LEPP

TECHNICAL RESOURCE APPROVALS REQUIRED BEFORE FABRICATION			
	OK	DATE	N/A
DRAFTING (O'Connell):			
MACHINE SHOP (Kaminski):			
CHEMISTRY (Conklin):			
ELECTRONICS SHOP (Barley):			
FURNACE BRAZING (Sherwood):			
BEAM WELDING (Sears):			
WELDING OTHER (Gallagher):			
UTILITIES INTEGRATION (Gallagher):			
STOCKROOMS (Lockwood):			

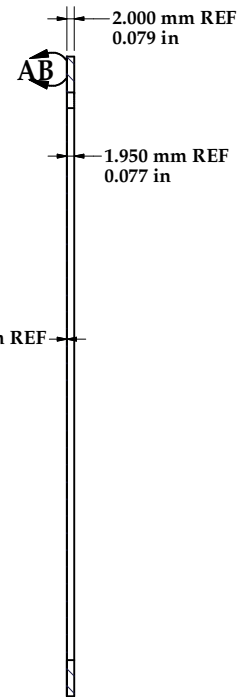
ITEM	DWG. NO.	DESCRIPTION	G1	G2	G3	REMARKS	REV.	
			QUANTITY					
PRINT DISTR.	6080-103	PLOT DATE: CAD FILE NAME: 6080-103 3GEM.idw						
UNLESS OTHERWISE SPECIFIED: DIMENSIONS ARE IN INCHES: TOLERANCES ON: .00 ± .010 .000 ± .005 FRACTIONS ± 1/64 ANGLES ± 0.5° ALL SURFACES						CORNELL UNIVERSITY Floyd R. Newman Laboratory Ithaca, NY 14853		
3GEM Module Assm								
CHECKED BY: Peterson	DRAWN BY: MDS	DRAWN FOR: Peterson	DATE: 4/16/2007	SCALE: Noted	D	6080-103	REV.	
APPROVED BY: Peterson						SH. NO. 4 OF 10		

REVISIONS				
SYM.	ZONE	DESCRIPTION	DATE	APP.

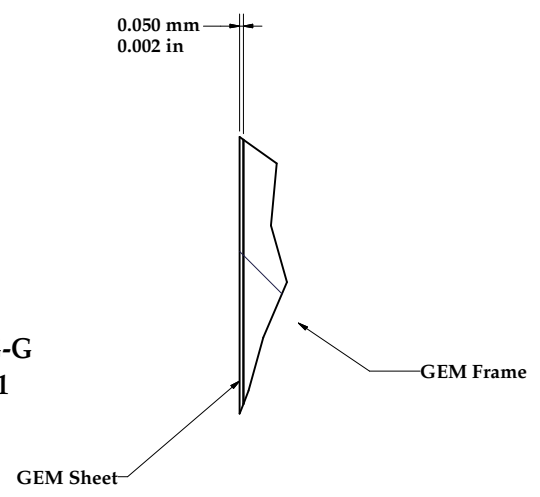
3 **6080-106 GEM Assm**
 FILE NAME: 6080-103
 SHEET NO.: 5
 DFT. SCALE: Noted
 MATERIAL NOTED
 QTY: 3 Per Assm
 NOTES:



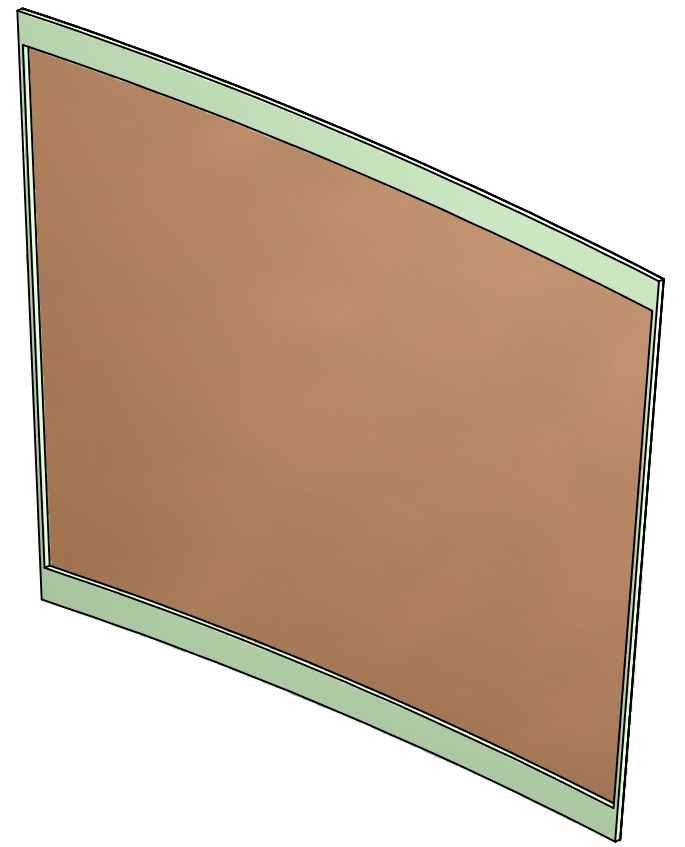
SCALE 1:1



SECTION G-G
SCALE 1:1



DETAIL AB
SCALE 20:1



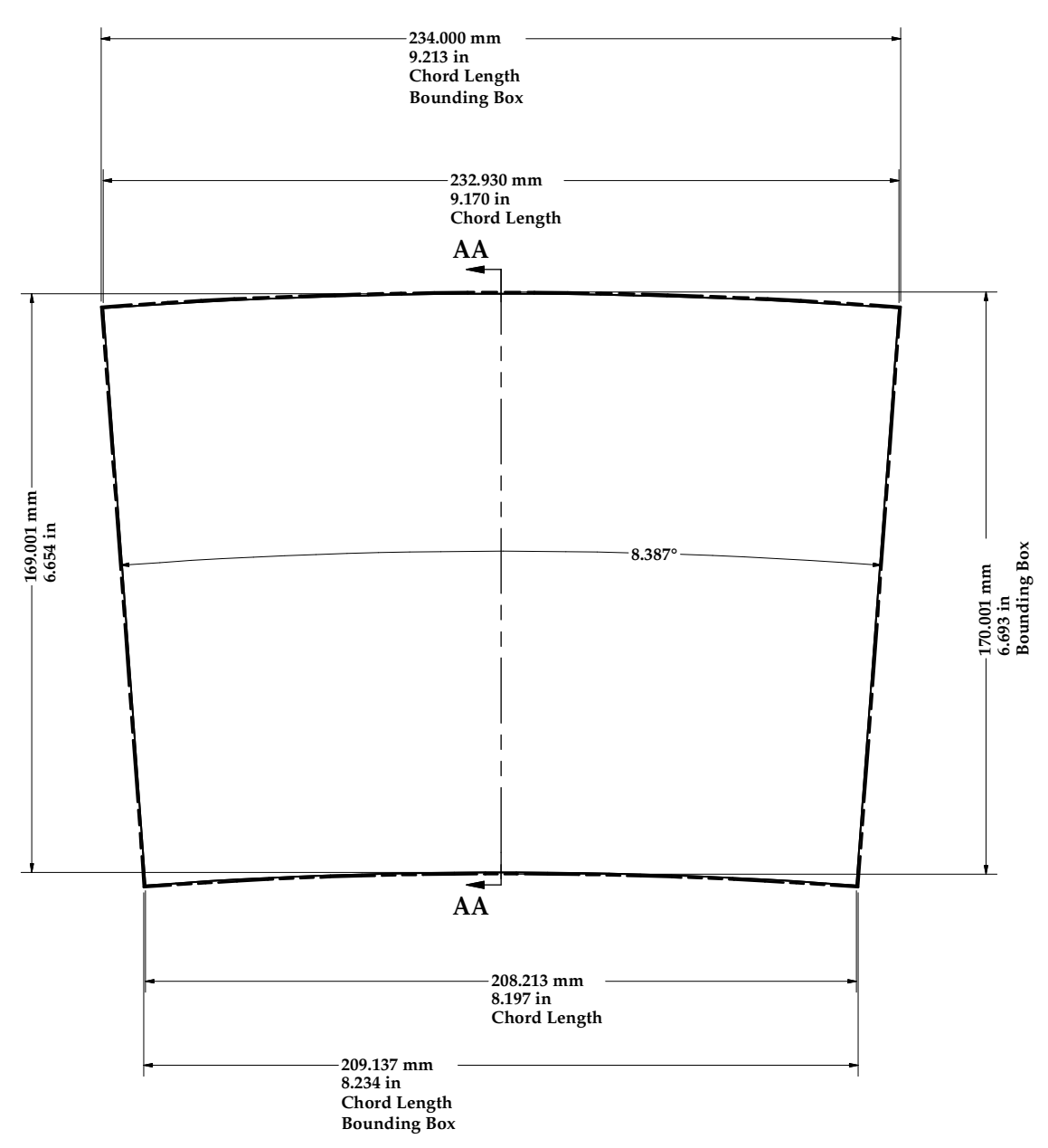
SCALE 1:1

FOR MACHINING LUBRICANT USE ONLY
 ALKALINE DETERGENT LUBRICANT CIMSTAR 40
 OR EQUIVALENT APPROVED BY CORNELL LEPP

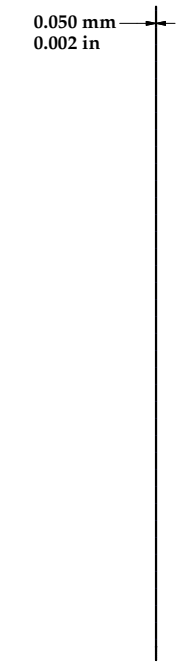
TECHNICAL RESOURCE APPROVALS REQUIRED BEFORE FABRICATION			
	OK	DATE	N/A
DRAFTING (O'Connell):			
MACHINE SHOP (Kaminski):			
CHEMISTRY (Conklin):			
ELECTRONICS SHOP (Barley):			
FURNACE BRAZING (Sherwood):			
BEAM WELDING (Sears):			
WELDING OTHER (Gallagher):			
UTILITIES INTEGRATION (Gallagher):			
STOCKROOMS (Lockwood):			

ITEM	DWG. NO.	DESCRIPTION	G1	G2	G3	REMARKS	REV.
			QUANTITY				
PRINT DISTR. PLOT DATE: CAD FILE NAME: 6080-103 3GEM.idw UNLESS OTHERWISE SPECIFIED: DIMENSIONS ARE IN INCHES: TOLERANCES ON: .00 ± 0.10 .000 ± 0.005 FRACTIONS ± 1/64 ANGLES ± 0.5° ALL SURFACES ✓							
6080-103 SH. NO. 5 OF 10 REV.		CORNELL UNIVERSITY Floyd R. Newman Laboratory Ithaca, NY 14853			3GEM Module Assm		
CHECKED BY: Peterson APPROVED BY: Peterson		DRAWN BY: MDS	DRAWN FOR: Peterson	DATE: 4/16/2007	SCALE: Noted	D	6080-103 SH. NO. 5 OF 10

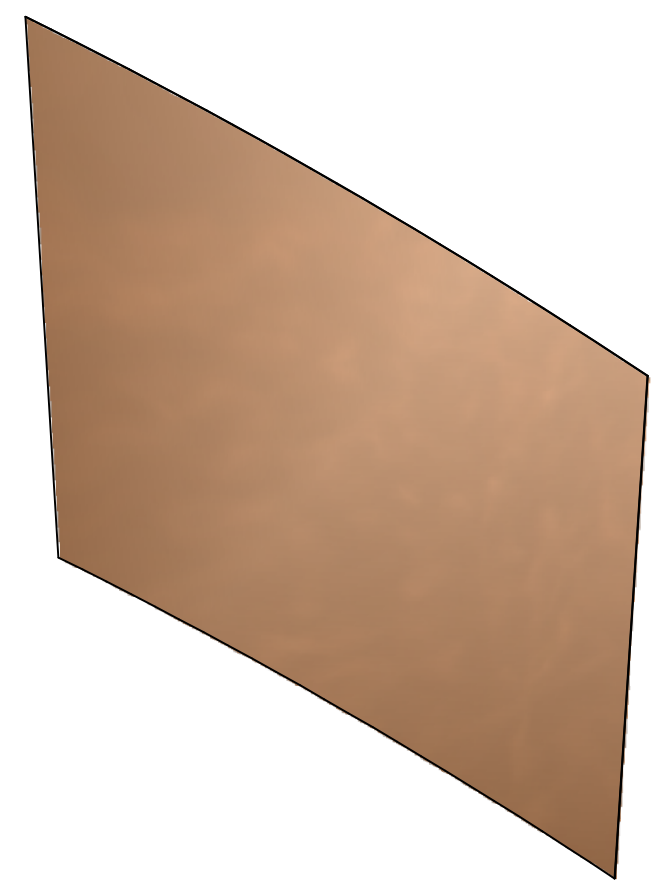
REVISIONS				
SYM.	ZONE	DESCRIPTION	DATE	APP.



SCALE 1:1



SECTION AA-AA
SCALE 1:1



SCALE 1:1

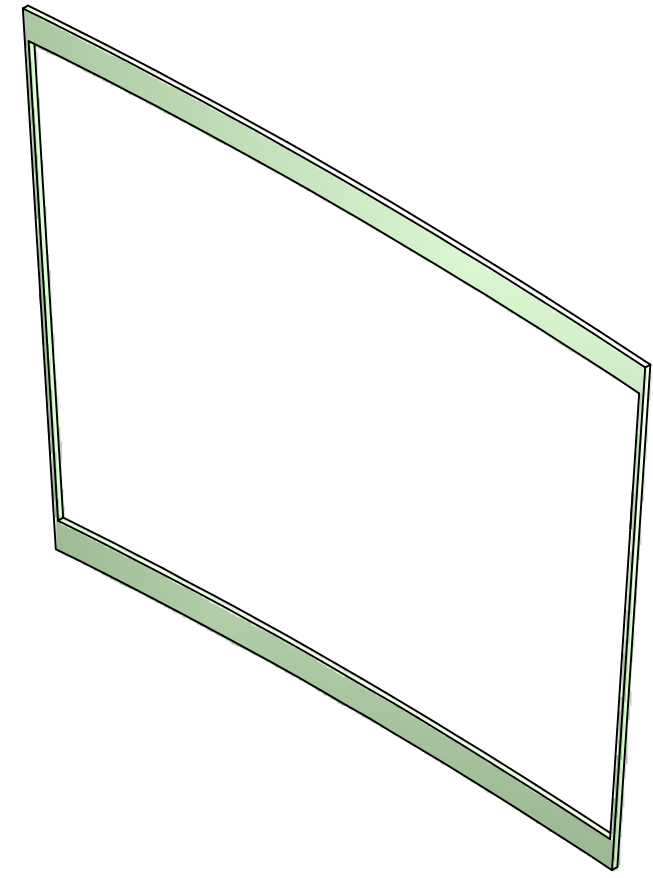
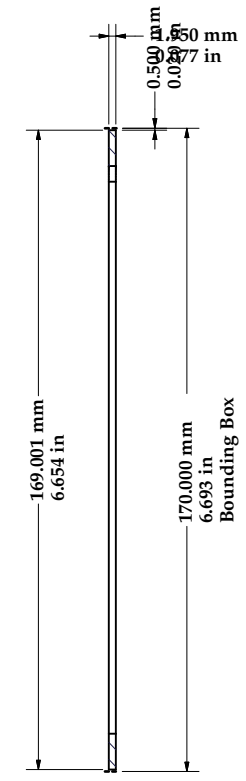
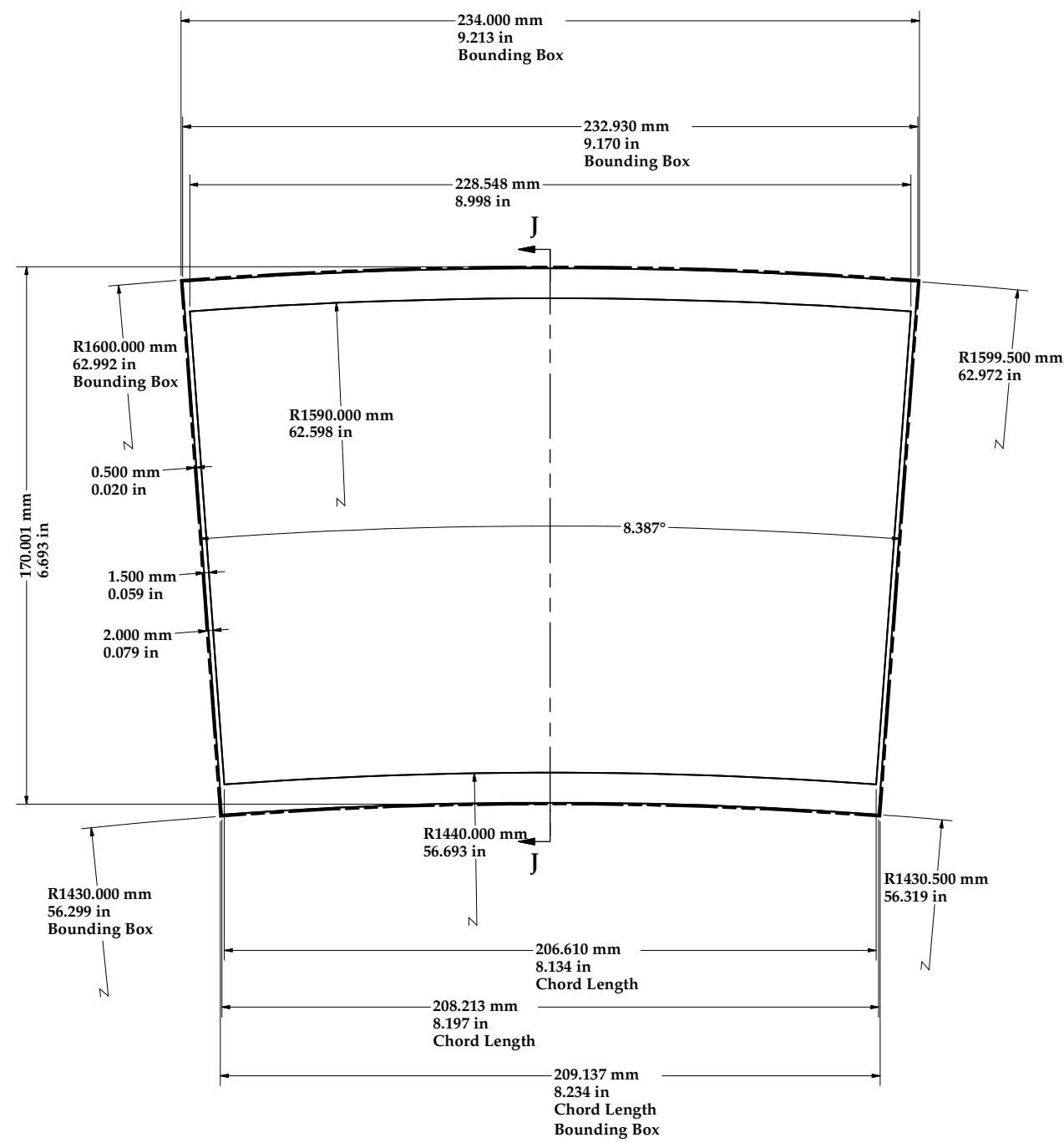
3 6080-107 GEM Sheet
 FILE NAME: 6080-103
 SHEET NO.: 6
 DFT. SCALE: Noted
 MATERIAL: OFHC Copper
 QTY: 1 Per Assm.
 NOTES:

FOR MACHINING LUBRICANT USE ONLY
 ALKALINE DETERGENT LUBRICANT CIMSTAR 40
 OR EQUIVALENT APPROVED BY CORNELL LEPP

TECHNICAL RESOURCE APPROVALS REQUIRED BEFORE FABRICATION			
	OK	DATE	N/A
DRAFTING (O'Connell):			
MACHINE SHOP (Kaminski):			
CHEMISTRY (Conklin):			
ELECTRONICS SHOP (Barley):			
FURNACE BRAZING (Sherwood):			
BEAM WELDING (Sears):			
WELDING OTHER (Gallagher):			
UTILITIES INTEGRATION (Gallagher):			
STOCKROOMS (Lockwood):			

ITEM	DWG. NO.	DESCRIPTION	G1	G2	G3	REMARKS	REV.
			QUANTITY				
PRINT DISTR. PLOT DATE: CAD FILE NAME: 6080-103 3GEM.idw							
UNLESS OTHERWISE SPECIFIED: DIMENSIONS ARE IN INCHES: TOLERANCES ON: .00 ± .010 .000 ± .005 FRACTIONS ± 1/64 ANGLES ± 0.5° ALL SURFACES			CORNELL UNIVERSITY Floyd R. Newman Laboratory Ithaca, NY 14853				
3GEM Module Assm			CHECKED BY: Peterson APPROVED BY: Peterson				
DRAWN BY MDS		DRAWN FOR Peterson		DATE 4/16/2007		SCALE D	
6080-103 SH. NO. 6 OF 10		REV.					

REVISIONS				
SYM.	ZONE	DESCRIPTION	DATE	APP.



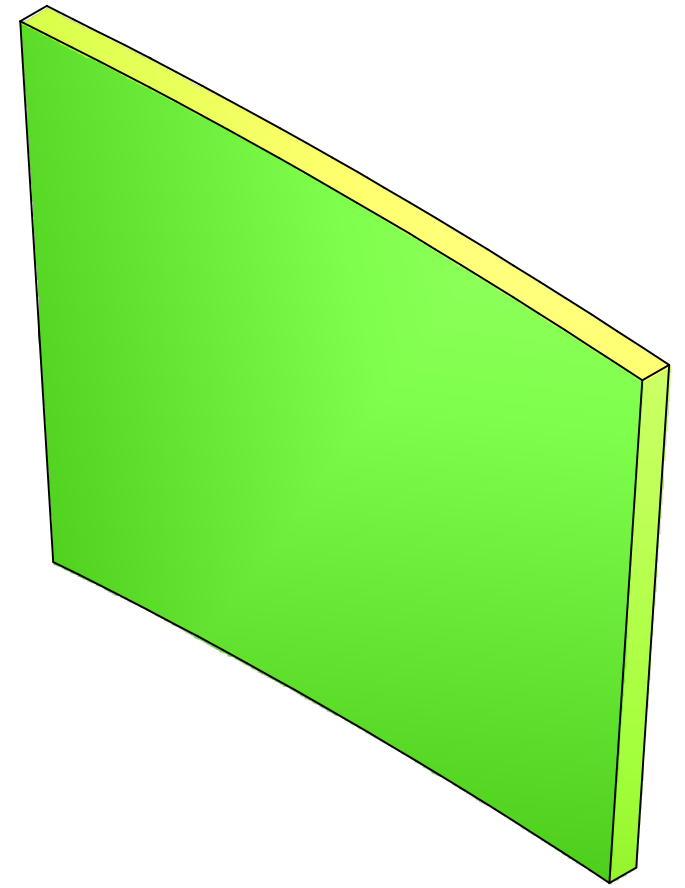
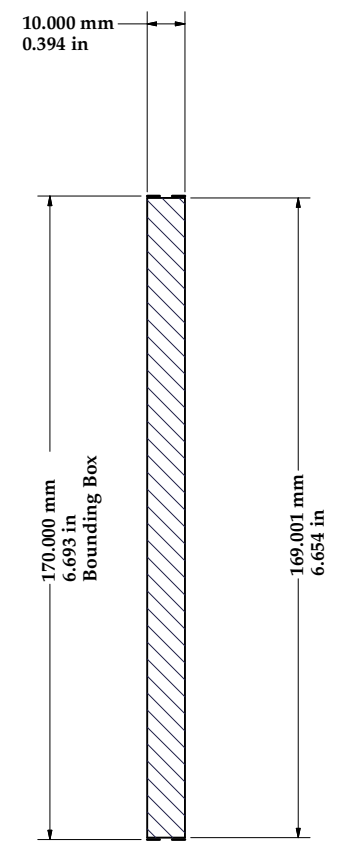
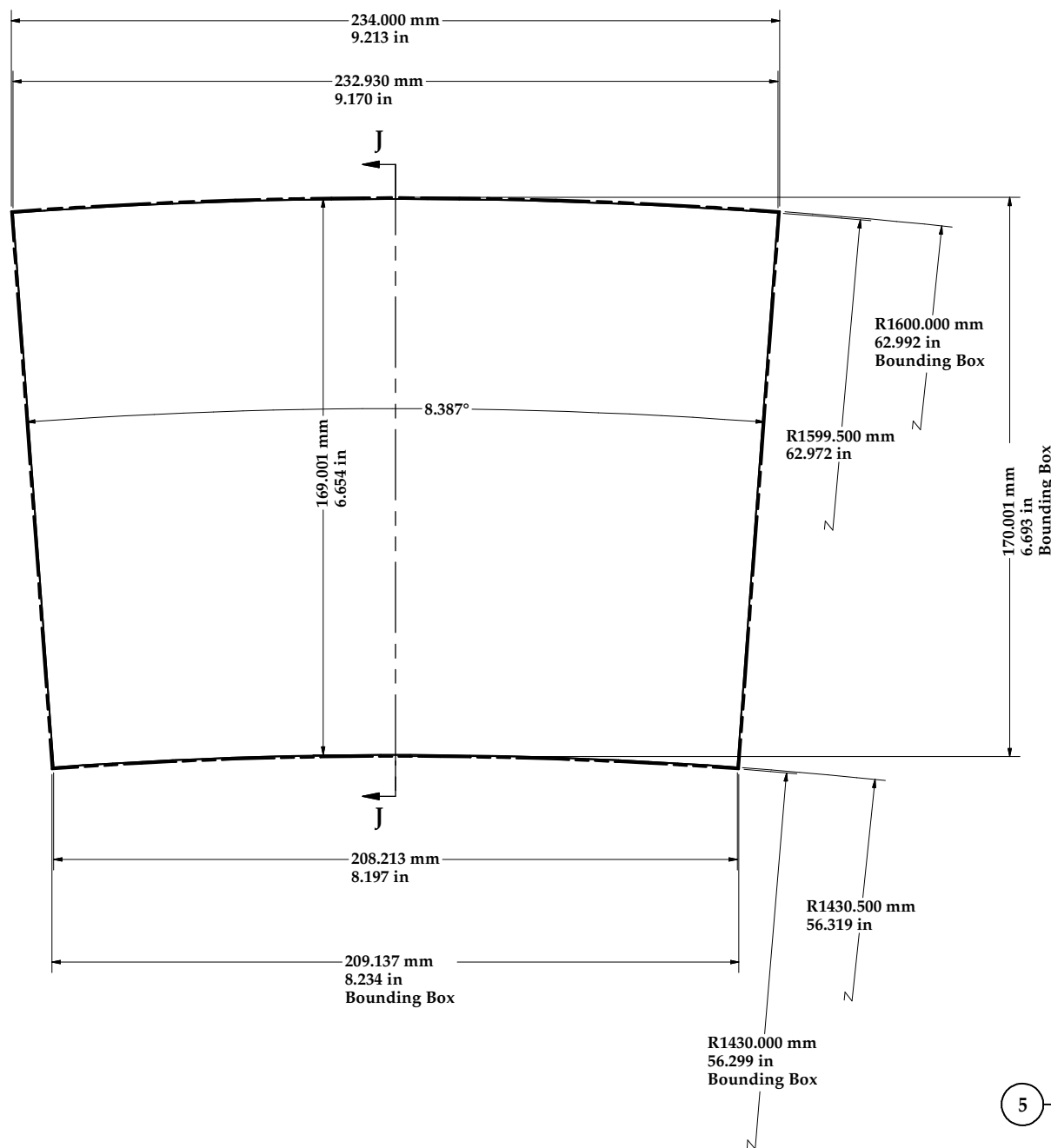
4 6080-108 GEM Frame
 FILE NAME: 6080-103
 SHEET NO.: 7
 DFT. SCALE: NOTED
 MATERIAL: G-10
 QTY: 1 Per Assm
 NOTES:

FOR MACHINING LUBRICANT USE ONLY
 ALKALINE DETERGENT LUBRICANT CIMSTAR 40
 OR EQUIVALENT APPROVED BY CORNELL LEPP

TECHNICAL RESOURCE APPROVALS REQUIRED BEFORE FABRICATION			
	OK	DATE	N/A
DRAFTING (O'Connell):			
MACHINE SHOP (Kaminski):			
CHEMISTRY (Conklin):			
ELECTRONICS SHOP (Barley):			
FURNACE BRAZING (Sherwood):			
BEAM WELDING (Sears):			
WELDING OTHER (Gallagher):			
UTILITIES INTEGRATION (Gallagher):			
STOCKROOMS (Lockwood):			

ITEM	DWG. NO.	DESCRIPTION	G1	G2	G3	REMARKS	REV.
			QUANTITY				
PRINT DISTR.		PLOT DATE: CAD FILE NAME: 6080-103 3GEM.idw					
6080-103 SH. NO. 7 OF 10		UNLESS OTHERWISE SPECIFIED: DIMENSIONS ARE IN INCHES: TOLERANCES ON: .00 ± .010 .000 ± .005 FRACTIONS ± 1/64 ANGLES ± 0.5° ALL SURFACES					
		CORNELL UNIVERSITY FLOYD R. NEWMAN LABORATORY Ithaca, NY 14853					
		3GEM Module Assm					
CHECKED BY: Peterson	DRAWN BY: MDS	DRAWN FOR: Peterson	DATE: 4/16/2007	SCALE: Noted	D	6080-103 SH. NO. 7 OF 10	REV.
APPROVED BY: Peterson							

REVISIONS				
SYM.	ZONE	DESCRIPTION	DATE	APP.



5 **6080-107 Gate**
 FILE NAME: 6080-103
 SHEET NO.: 8
 DFT. SCALE: Noted
 MATERIAL: G-10
 QTY: 1 Per Assm
 NOTES:

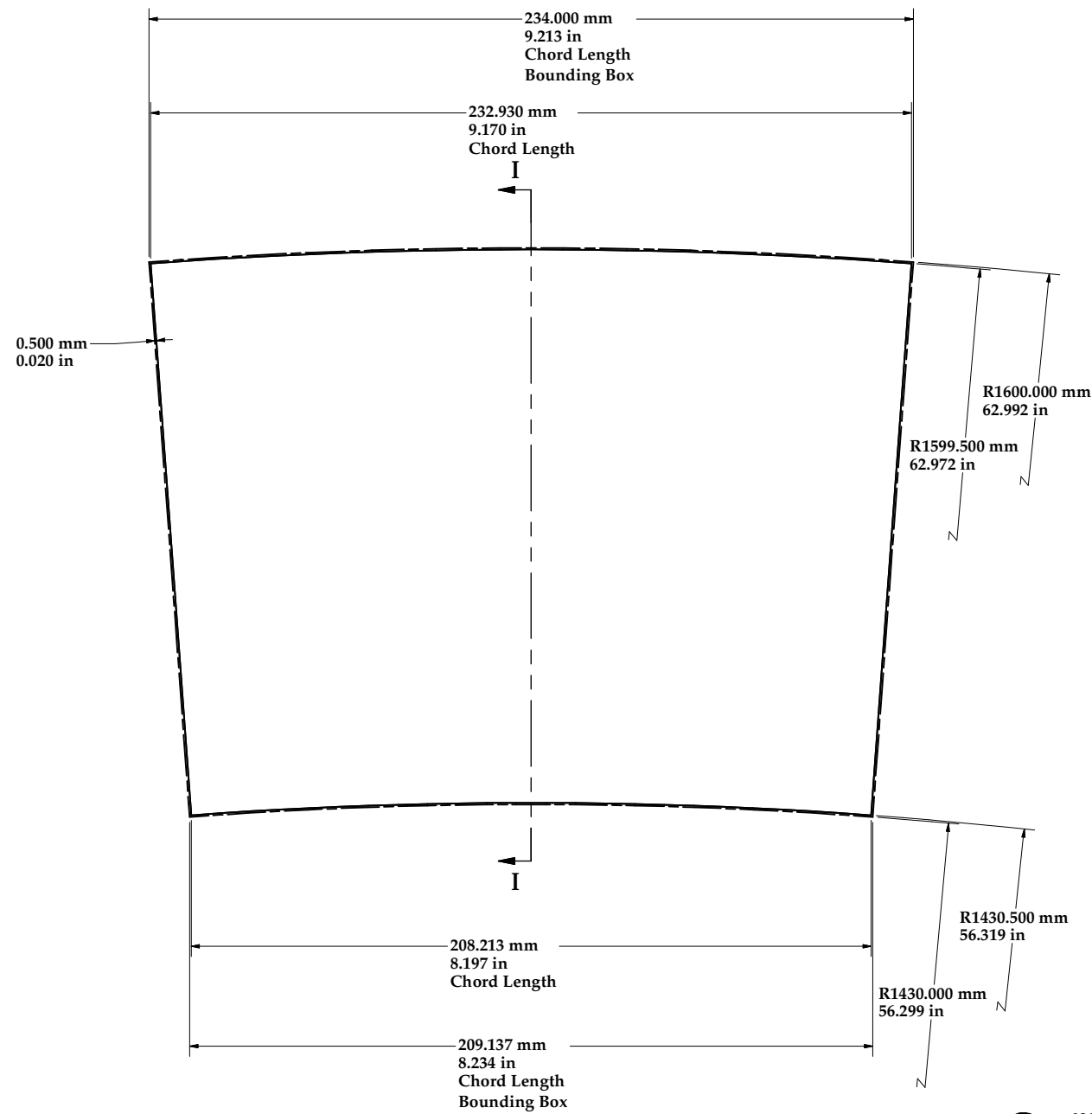
SCALE 1:1

FOR MACHINING LUBRICANT USE ONLY
 ALKALINE DETERGENT LUBRICANT CIMSTAR 40
 OR EQUIVALENT APPROVED BY CORNELL LEPP

TECHNICAL RESOURCE APPROVALS REQUIRED BEFORE FABRICATION			
	OK	DATE	N/A
DRAFTING (O'Connell):			
MACHINE SHOP (Kaminski):			
CHEMISTRY (Conklin):			
ELECTRONICS SHOP (Barley):			
FURNACE BRAZING (Sherwood):			
BEAM WELDING (Sears):			
WELDING OTHER (Gallagher):			
UTILITIES INTEGRATION (Gallagher):			
STOCKROOMS (Lockwood):			

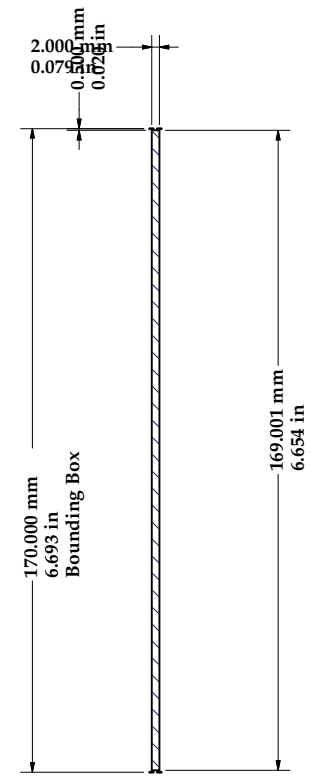
ITEM	DWG. NO.	DESCRIPTION	G1	G2	G3	REMARKS	REV.
			QUANTITY				
PRINT DISTR. PLOT DATE: CAD FILE NAME: 6080-103 3GEM.idw UNLESS OTHERWISE SPECIFIED: DIMENSIONS ARE IN INCHES: TOLERANCES ON: .00 ± .010 .000 ± .005 FRACTIONS ± 1/64 ANGLES ± 0.5° ALL SURFACES ✓							
6080-103 SH. NO. 8 OF 10 REV.		CORNELL UNIVERSITY Floyd R. Newman Laboratory Ithaca, NY 14853			3GEM Module Assm		
CHECKED BY: Peterson APPROVED BY: Peterson		DRAWN BY: MDS	DRAWN FOR: Peterson	DATE: 4/16/2007	SCALE: Noted	D	6080-103 SH. NO. 8 OF 10

REVISIONS				
SYM.	ZONE	DESCRIPTION	DATE	APP.

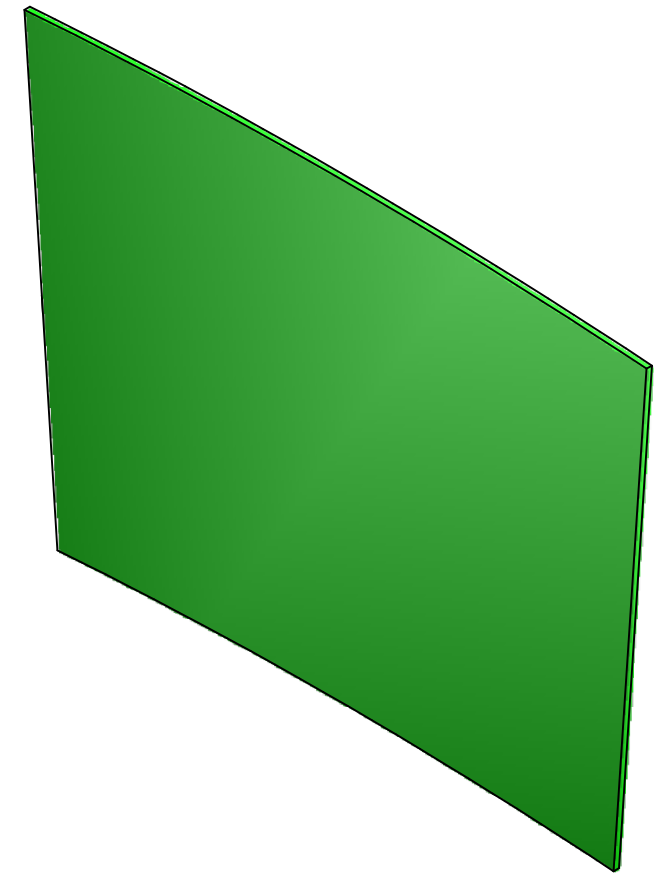


SCALE 1 : 1

6 6080-105 Padboard
 FILE NAME: 6080-103
 SHEET NO.: 9
 DFT. SCALE: Noted
 MATERIAL: G-10
 QTY: 1 Per Assm
 NOTES:



SECTION I-I
SCALE 1 : 1



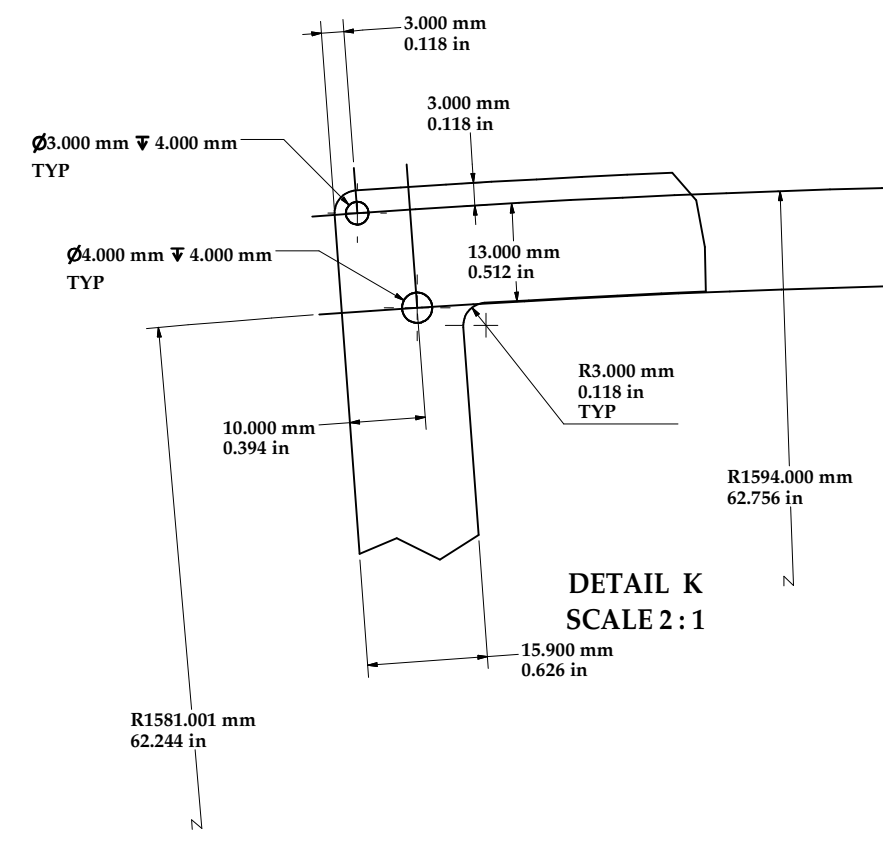
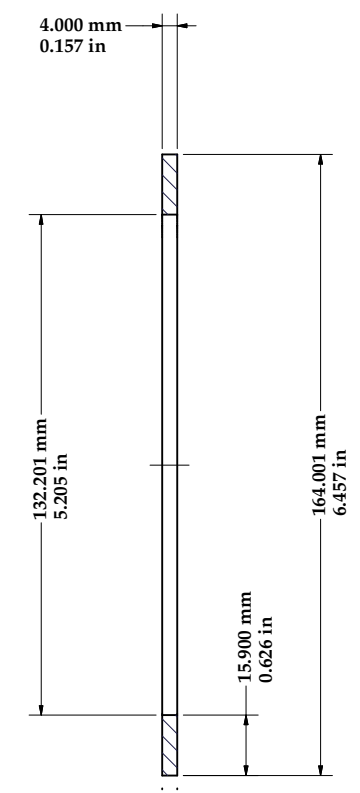
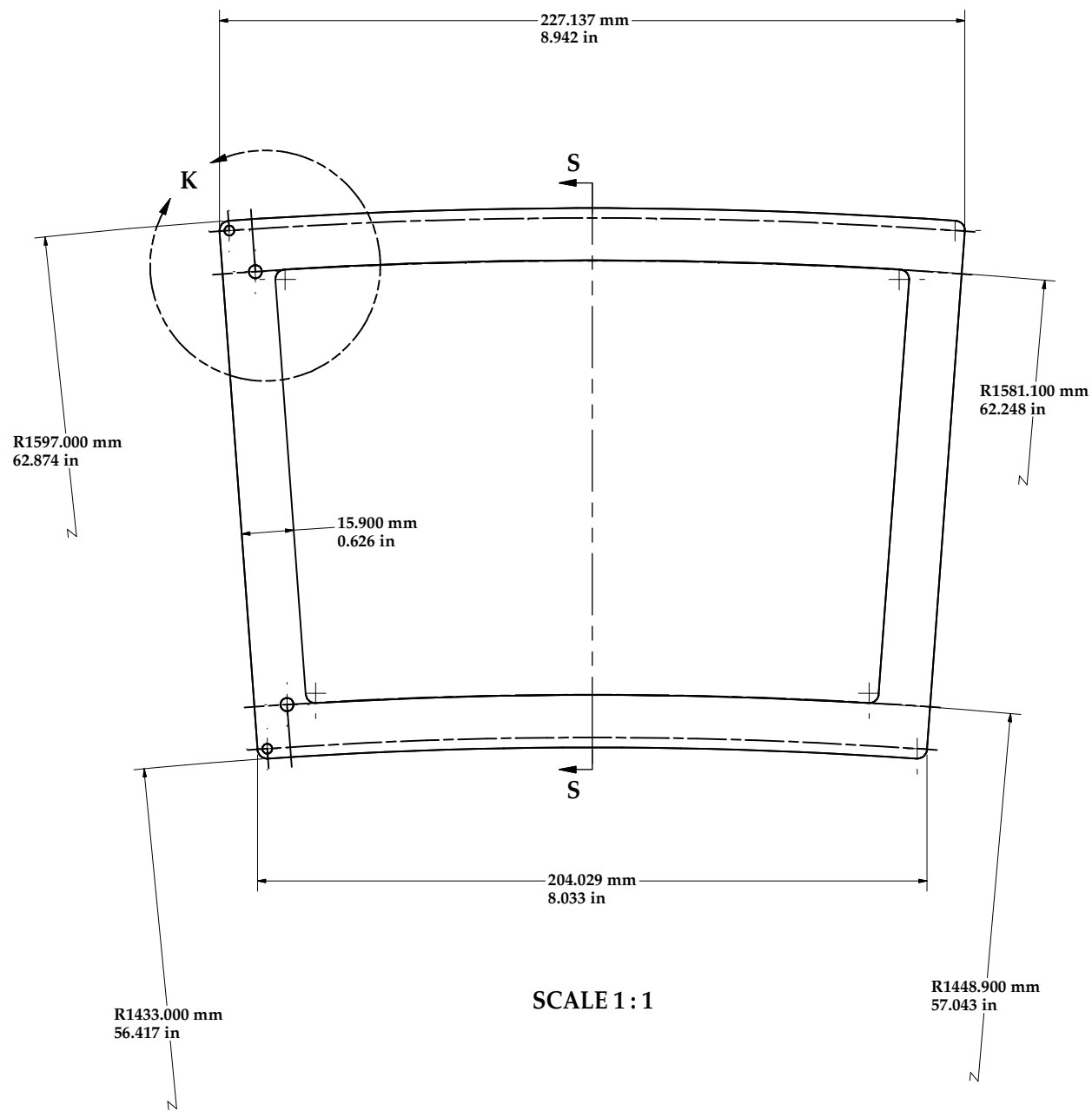
SCALE 1 : 1

FOR MACHINING LUBRICANT USE ONLY
 ALKALINE DETERGENT LUBRICANT CIMSTAR 40
 OR EQUIVALENT APPROVED BY CORNELL LEPP

TECHNICAL RESOURCE APPROVALS REQUIRED BEFORE FABRICATION			
	OK	DATE	N/A
DRAFTING (O'Connell):			
MACHINE SHOP (Kaminski):			
CHEMISTRY (Conklin):			
ELECTRONICS SHOP (Barley):			
FURNACE BRAZING (Sherwood):			
BEAM WELDING (Sears):			
WELDING OTHER (Gallagher):			
UTILITIES INTEGRATION (Gallagher):			
STOCKROOMS (Lockwood):			

ITEM	DWG. NO.	DESCRIPTION	G1	G2	G3	REMARKS	REV.
			QUANTITY				
PRINT DISTR. PLOT DATE: CAD FILE NAME: 6080-103 3GEM.idw							
UNLESS OTHERWISE SPECIFIED: DIMENSIONS ARE IN INCHES: TOLERANCES ON: .00 ± .010 .000 ± .005 FRACTIONS ± 1/64 ANGLES ± 0.5° ALL SURFACES			CORNELL UNIVERSITY Floyd R. Newman Laboratory Ithaca, NY 14853				
3GEM Module Assm			DRAWN BY: MDS DRAWN FOR: Peterson DATE: 4/16/2007 SCALE: Noted				
CHECKED BY: Peterson APPROVED BY: Peterson			6080-103 SH. NO. 9 OF 10				

REVISIONS				
SYM.	ZONE	DESCRIPTION	DATE	APP.



SECTION S-S
SCALE 1:1

7 **6080-110 Mounting Bracket**
 FILE NAME: 6080-103
 SHEET NO: 10
 DFT. SCALE: Noted
 MATERIAL: 6061-T6 Alum
 QTY: 1 Per Assm
 NOTES:

FOR MACHINING LUBRICANT USE ONLY
 ALKALINE DETERGENT LUBRICANT CIMSTAR 40
 OR EQUIVALENT APPROVED BY CORNELL LEPP

TECHNICAL RESOURCE APPROVALS REQUIRED BEFORE FABRICATION			
	OK	DATE	N/A
DRAFTING (O'Connell):			
MACHINE SHOP (Kaminski):			
CHEMISTRY (Conklin):			
ELECTRONICS SHOP (Barley):			
FURNACE BRAZING (Sherwood):			
BEAM WELDING (Sears):			
WELDING OTHER (Gallagher):			
UTILITIES INTEGRATION (Gallagher):			
STOCKROOMS (Lockwood):			

ITEM	DWG. NO.	DESCRIPTION	G1	G2	G3	REMARKS	REV.
			QUANTITY				
PRINT DISTR.		PLOT DATE: CAD FILE NAME: 6080-103 3GEM.idw					
6080-103 SH. NO. 10 OF 10		UNLESS OTHERWISE SPECIFIED: DIMENSIONS ARE IN INCHES: TOLERANCES ON: .00 ± .010 .000 ± .005 FRACTIONS ± 1/64 ANGLES ± 0.5° ALL SURFACES					
		CORNELL UNIVERSITY FLOYD R. NEWMAN LABORATORY LABORATORY FOR ELEMENTARY-PARTICLE PHYSICS Ithaca, NY 14853					
		3GEM Module Assm					
CHECKED BY: Peterson	DRAWN BY: MDS	DRAWN FOR: Peterson	DATE: 4/16/2007	SCALE: Noted	D	6080-103 SH. NO. 10 OF 10	REV.