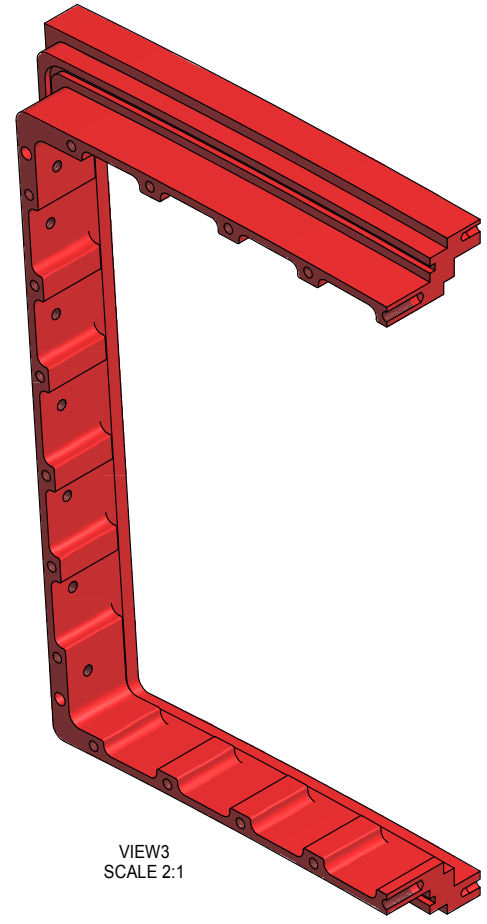
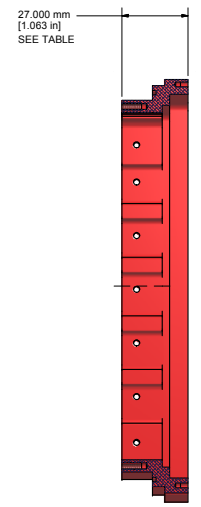
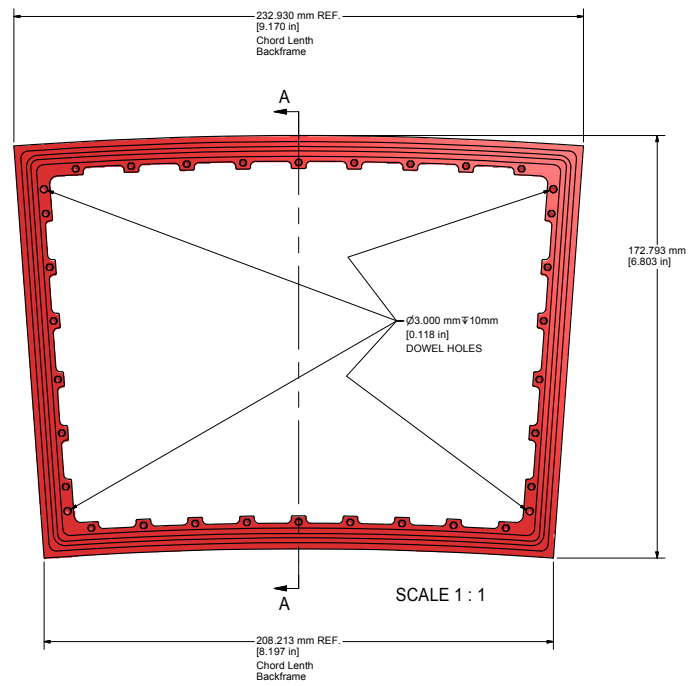


REVISIONS				
SYM	ZONE	DESCRIPTION	DATE	APP.



**Matl: Alum. 6061 T651**

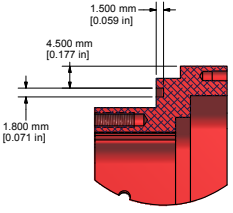
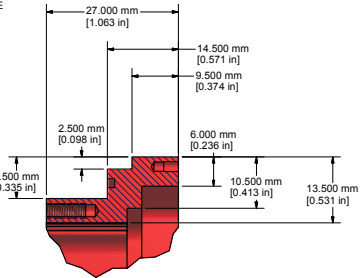
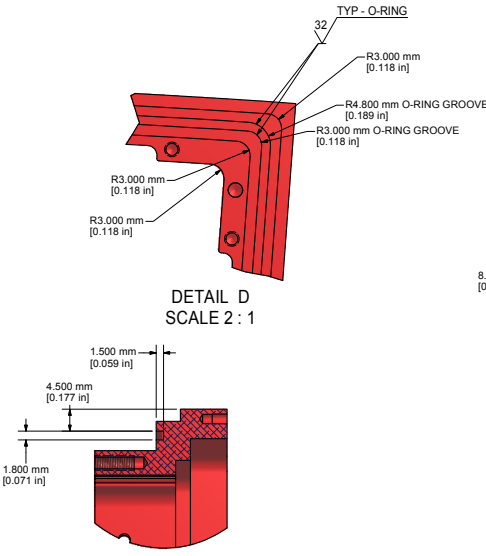
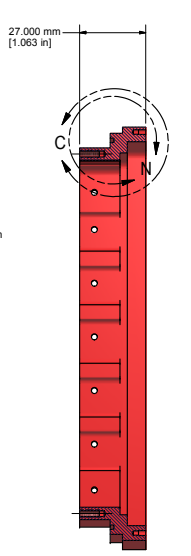
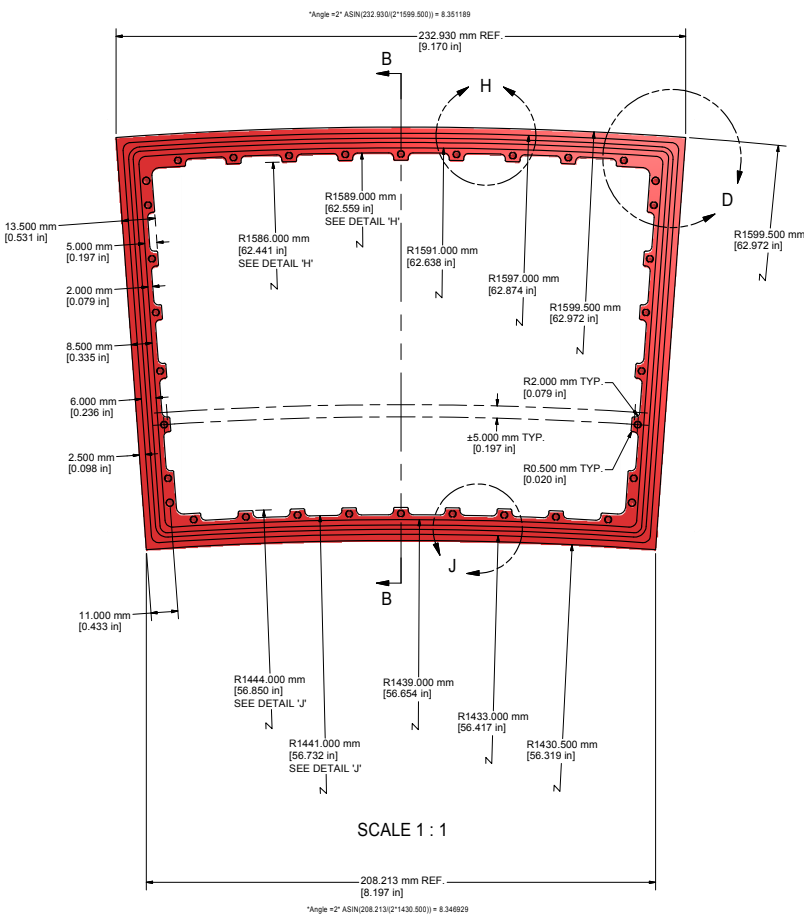
**Part requires multi-step process.**

- 1) Machine all surfaces and holes (unless noted) leaving 0.030inch extra material.  
(At least 0.020inch of material is to be removed from all surfaces.)
- 2) Deliver part to Cornell for stress relief process (Liquid Nitrogen cold shock).
- 3) Machine all surfaces and holes (unless noted) leaving 0.010inch extra material.  
(At least 0.010inch of material is to be removed from all surfaces.)
- 4) Deliver part to Cornell for stress relief process (Liquid Nitrogen cold shock).
- 5) Machine all surfaces and holes to final specifications.

Technical questions, including clarifications and proposals for exceptions, are to be directed to  
**Dan Peterson**  
 Senior Physicist, Laboratory for Elementary-Particle Physics, Cornell University  
 607-255-8784  
 dpp@lepp.cornell.edu

ITEM	DWG. NO.	DESCRIPTION	G1	G2	G3	REMARKS	REV.
			QUANTITY				
PRINT DISTR.	PLOT DATE: 4/11/2011 CAD FILE NAME: 6080-164.idw						
CR-1	UNLESS OTHERWISE SPECIFIED: DIMENSIONS ARE IN INCHES. TOLERANCES ON: .5 ± .02 .00 ± .010 .000 ± .005 FRACTIONS ± 1/100 ANGLES ± 15' ALL SURFACES ✓			CORNELL UNIVERSITY Floyd R. Newman Laboratory Ithaca, NY 14853			
		LP1 Endplate 3_LP1-Backframe-2					
CHECKED BY:	DRAWN BY:	DRAWN FOR:	DATE:	SCALE:	6080-164		REV.
APPROVED BY:	TMK	DPP	3/29/2011	D	SH. NO. 1 OF 9		

REVISIONS			DATE	APP.
SYM.	ZONE	DESCRIPTION		

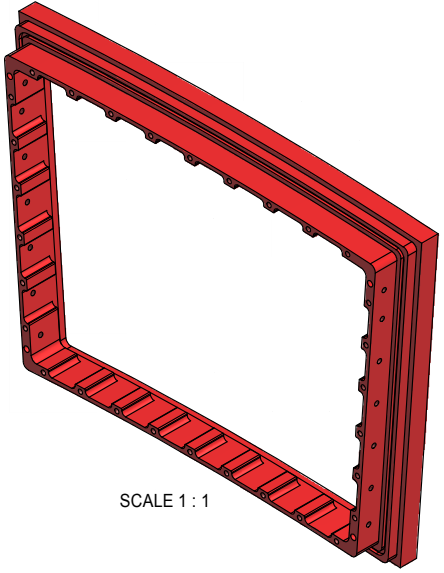


SECTION B-B  
SCALE 1 : 1

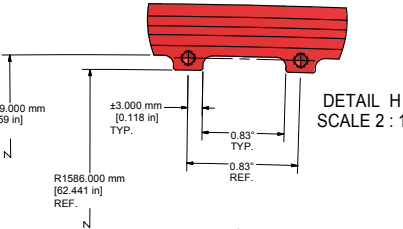
DETAIL C  
SCALE 2 : 1

DETAIL D  
SCALE 2 : 1

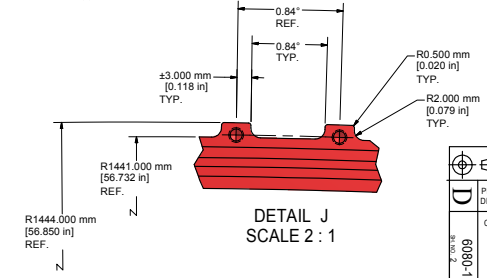
DETAIL N  
SCALE 2 : 1



SCALE 1 : 1



DETAIL H  
SCALE 2 : 1



DETAIL J  
SCALE 2 : 1

This sheet shows surface features.

Surface features have tolerance +/-0.002 inch within a frame defined by the dowel holes.  
Dowel holes are define on sheet 3.

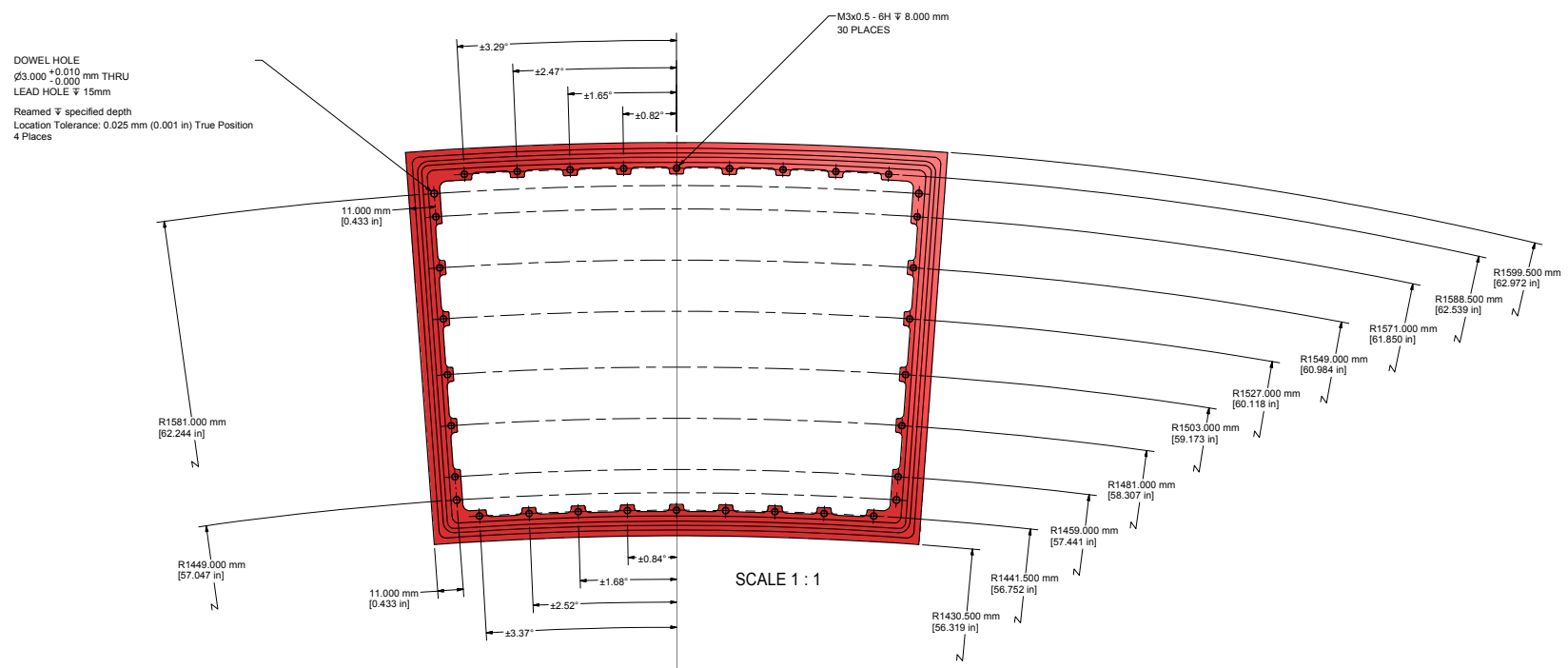
Reference measurements for surface features are shown on sheets 8 & 9.

ITEM	DWG. NO.	DESCRIPTION	QUANTITY			REMARKS	REV.
			G1	G2	G3		
PRINT DISTR.	PLOT DATE: 4/11/2011 CAD FILE NAME: 6080-164.dwg						
CR-1	UNLESS OTHERWISE SPECIFIED: DIMENSIONS ARE IN INCHES: TOLERANCES ON: Ø ± .01 HOLE ± .010 FRACTIONS ± .005 ANGLES ± 10' ALL SURFACES						
DRAWN BY TMK		DRAWN FOR DPP		DATE 3/29/2011	SCALE D	6080-164 SHEET NO. 2 OF 9	REV.

CORNELL UNIVERSITY  
FLOYD R. NEWMAN LABORATORY  
ITHACA, NY 14853

LP1 Endplate 3 LP1-Backframe-2

REVISIONS				
SYM	ZONE	DESCRIPTION	DATE	APP.



**This sheet shows dowel holes at the corner of the parts, on the "back" face, and threaded holes located in the x-y plane.**

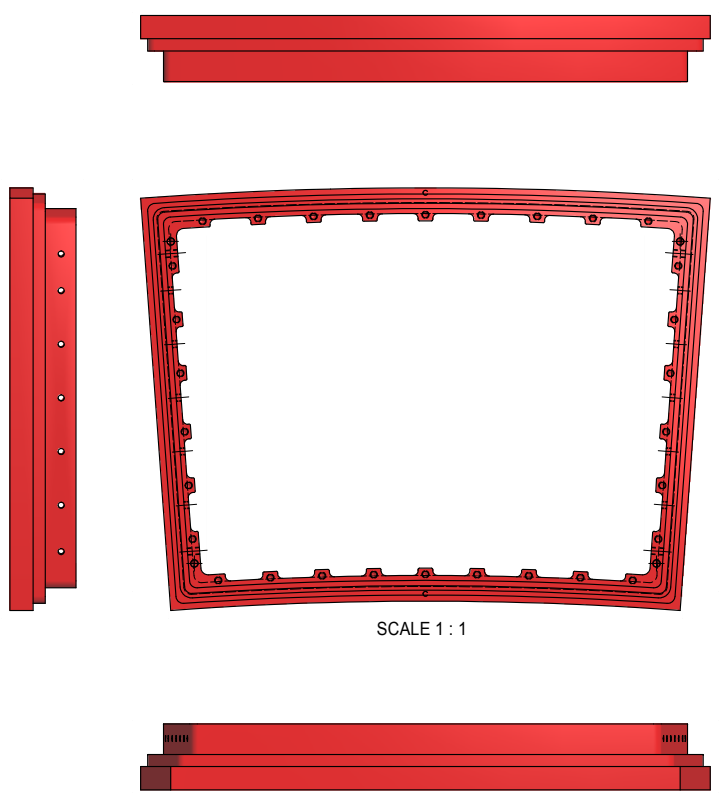
**Dowel holes have tolerance 0.001 true position.**  
**Threaded holes have tolerance +/- 0.005 inch in a frame defined by the dowel holes.**

**These holes may be made in process step 5 without pre-drilling in previous steps.**

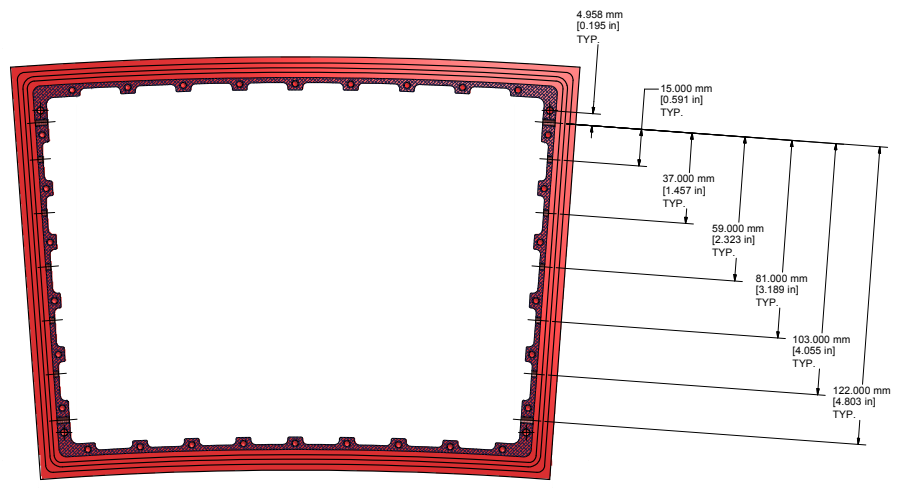
**Reference measurements for the dowel holes are shown of sheet 6.**

ITEM	DWG. NO.	DESCRIPTION	G1	G2	G3	REMARKS	REV.
			QUANTITY				
PRINT	PLOT DATE: 4/11/2011						
DISTR.	CAD FILE NAME: 6080-164.idw						
6080-164	CR-1	UNLESS OTHERWISE SPECIFIED:				CORNELL UNIVERSITY Floyd R. Newman Laboratory Ithaca, NY 14853	
	DIMENSIONS ARE IN INCHES:		TOLERANCES ON: .5 &gt; .02 .02 &gt; .010 .010 &gt; .005 FRACTIONS &gt; 1/32 ANGLES &gt; 1/2° ALL SURFACES <input checked="" type="checkbox"/>				
DRAWN BY		TMK	DRAWN FOR	DPP	DATE	3/29/2011	SCALE
CHECKED BY		APPROVED BY		DATE		3/29/2011	SCALE
6080-164		6080-164		6080-164		6080-164	
SH. NO. 3		OF 9		OF 9		OF 9	

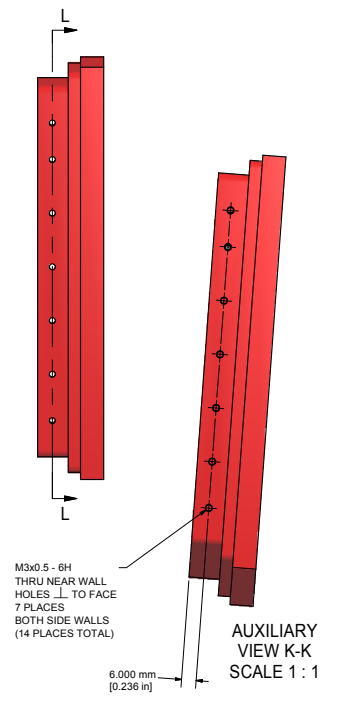
REVISIONS				
SYM	ZONE	DESCRIPTION	DATE	APP.



SCALE 1 : 1



SECTION L-L  
SCALE 1 : 1



M3x0.5 - 6H  
THRU NEAR WALL  
HOLES  $\perp$  TO FACE  
7 PLACES  
BOTH SIDE WALLS  
(14 PLACES TOTAL)

AUXILIARY  
VIEW K-K  
SCALE 1 : 1

**This sheet shows the threaded holes located in the sides.**

**These holes have tolerance  $\pm 0.010$  inch.**

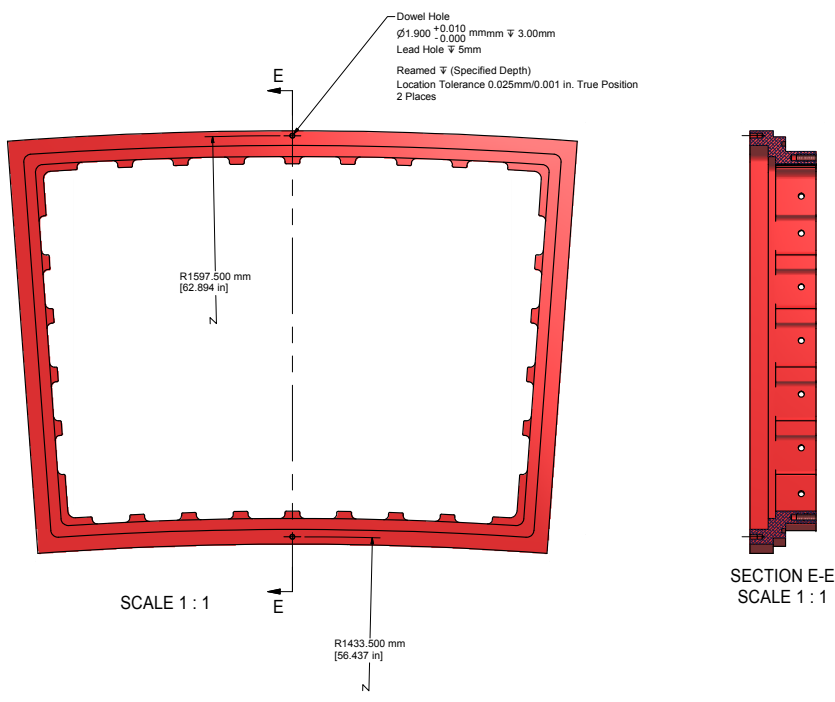
**These holes may be made in process step 5 without pre-drilling in previous steps.**

ITEM	DWG. NO.	DESCRIPTION	G1	G2	G3	REMARKS	REV.
			QUANTITY				

PRINT DISTR.	PLOT DATE: 4/11/2011 CAD FILE NAME: 6080-164.idw	<b>CORNELL UNIVERSITY</b> <b>LEPP</b> LABORATORY FOR ELEMENTARY PARTICLES PHYSICS CORNELL UNIVERSITY Floyd R. Newman Laboratory Ithaca, NY 14853	
CR-1 UNLESS OTHERWISE SPECIFIED: DIMENSIONS ARE IN INCHES. TOLERANCES ON: .5 ± .02 .00 ± .010 .000 ± .005 FRACTIONS ± .002 ANGLES ± 15' ALL SURFACES $\sqrt{\text{V}}$	LP1 Endplate 3_LP1-Backframe-2		
CHECKED BY:	DRAWN BY: TMK	DRAWN FOR: DPP	DATE: 3/29/2011
APPROVED BY:	SCALE: D	6080-164	REV. SH. NO. 4 OF 9

REVISIONS				
SYM.	ZONE	DESCRIPTION	DATE	APP.



This sheet shows the dowel holes on the "front" face used for locating the pad boards.  
 Dowel holes have location tolerance 0.001 inch true position  
 within a frame defined by the dowel holes on sheet 2.

Reference measurements for these dowels are shown on sheet 7.

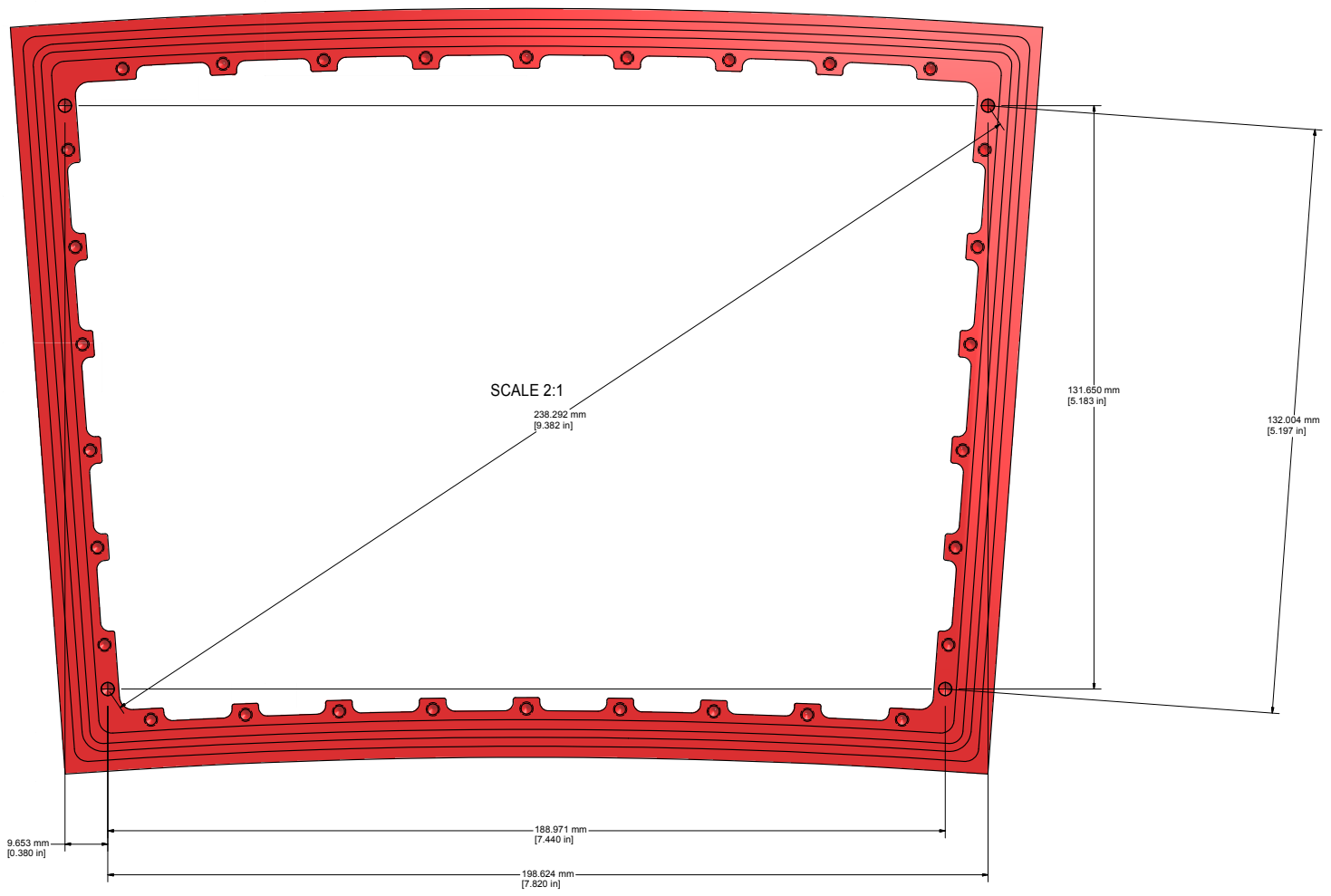
These holes may be made in process step 5 without pre-drilling in previous steps.

ITEM	DWG. NO.	DESCRIPTION	QUANTITY			REMARKS	REV.
			G1	G2	G3		

PRINT DISTR.	PLOT DATE: 4/11/2011 CAD FILE NAME: 6080-164.idw	CORNELL UNIVERSITY LEPP LABORATORY FOR ELEMENTARY PARTICLE PHYSICS FLOYD R. NEWMAN LABORATORY ITHACA, NY 14853	CORNELL UNIVERSITY Floyd R. Newman Laboratory Ithaca, NY 14853
	CR-1 UNLESS OTHERWISE SPECIFIED: DIMENSIONS ARE IN INCHES. TOLERANCES ON: .5 ± .02 .00 ± .010 .000 ± .005 FRACTIONS ± .002 ANGLES ± 10' ALL SURFACES <input checked="" type="checkbox"/>		
6080-164 /304	DRAWN BY TMK	DRAWN FOR DPP	DATE 3/29/2011
CHECKED BY APPROVED BY	SCALE D	6080-164 SH. NO. 5 OF 9	REV.

REVISIONS				
SYM.	ZONE	DESCRIPTION	DATE	APP.



SCALE 2:1  
238.292 mm  
[9.382 in]

131.650 mm  
[5.183 in]

132.004 mm  
[5.197 in]

9.653 mm  
[0.380 in]

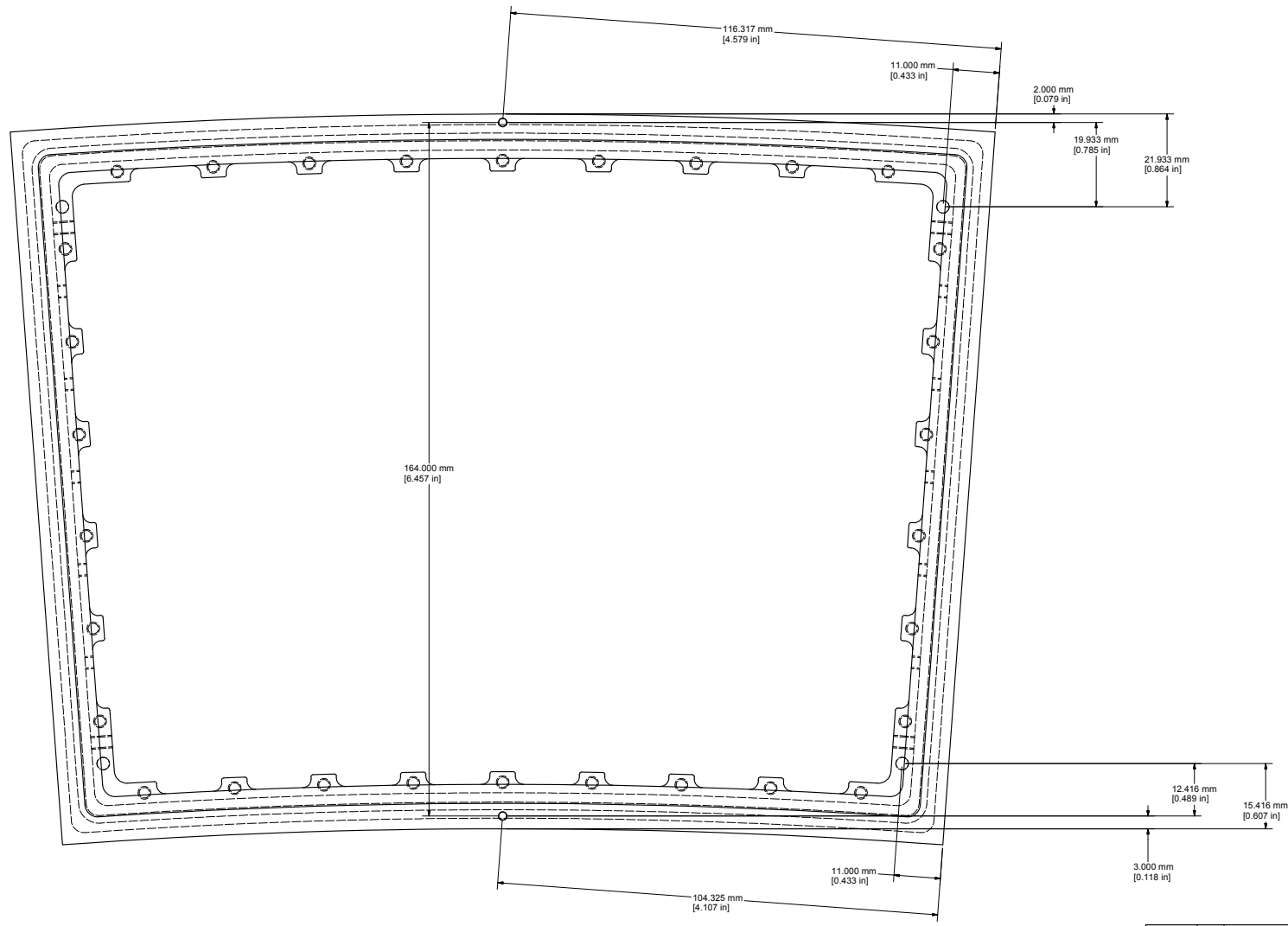
188.971 mm  
[7.440 in]

198.624 mm  
[7.820 in]

This sheet shows reference measurements for the dowel holes on the "back" face for quality control.

ITEM	DWG. NO.	DESCRIPTION	G1	G2	G3	REMARKS	REV.
			QUANTITY				
PRINT DISTR.	PLOT DATE: 4/11/2011 CAD FILE NAME: 6080-164.idw						
CR-1	UNLESS OTHERWISE SPECIFIED: DIMENSIONS ARE IN INCHES: TOLERANCES ON: .5 ± .02 .00 ± .010 .000 ± .005 FRACTIONS ± 1/32 ANGLES ± 15' ALL SURFACES <input checked="" type="checkbox"/>	<b>CORNELL UNIVERSITY</b> LABORATORY FOR ELEMENTARY PARTICLES PHYSICS		CORNELL UNIVERSITY Floyd R. Newman Laboratory Ithaca, NY 14853			
		LP1 Endplate 3_LP1-Backframe-2					
CHECKED BY:	DRAWN BY	DRAWN FOR	DATE	SCALE	6080-164		REV.
APPROVED BY:	TMK	DPP	3/29/2011	D	SH. NO. 6 OF 9		

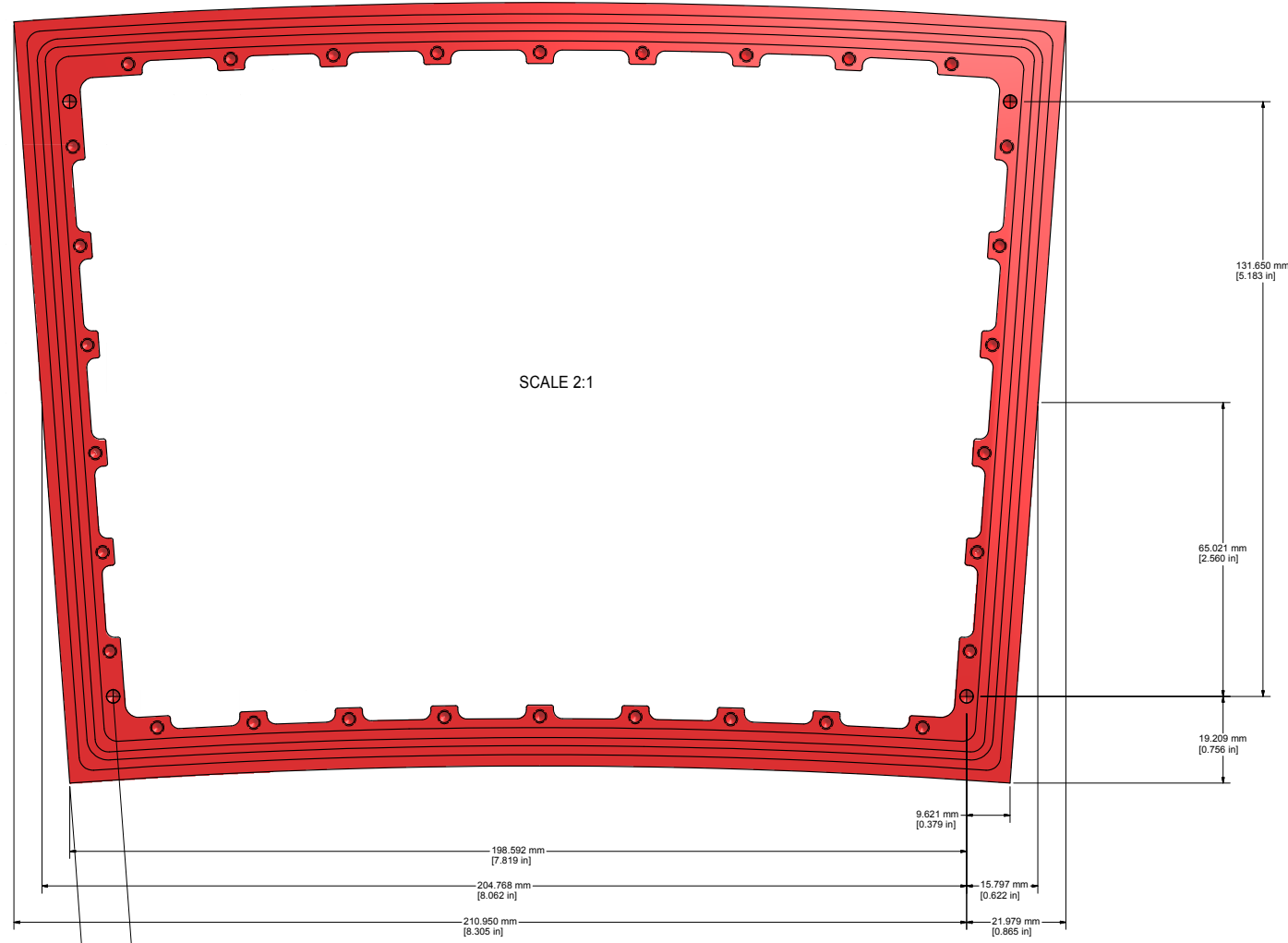
REVISIONS			
SYM	ZONE	DESCRIPTION	DATE APP.



This sheet shows reference measurements for the dowel holes on the "front" face for quality control.

ITEM	DWG. NO.	DESCRIPTION	G1	G2	G3	REMARKS	REV.
			QUANTITY				
PRINT	PLOT DATE: 4/11/2011						
DISTR.	CAD FILE NAME: 6080-164.idw						
CR-1	UNLESS OTHERWISE SPECIFIED:				CORNELL UNIVERSITY Floyd R. Newman Laboratory Ithaca, NY 14853		
DIMENSIONS ARE IN INCHES:			TOLERANCES ON: .5 ± .02 .00 ± .010 .000 ± .005 FRACTIONS ± .002 ANGLES ± 15' ALL SURFACES <input checked="" type="checkbox"/>				
DRAWN BY: TMK DRAWN FOR: DPP DATE: 3/29/2011 SCALE: D			6080-164 SH. NO. 7 OF 9		REV.		

REVISIONS				
SYM.	ZONE	DESCRIPTION	DATE	APP.



This sheet shows reference measurements for surfaces, in the "x" dimension, for quality control.

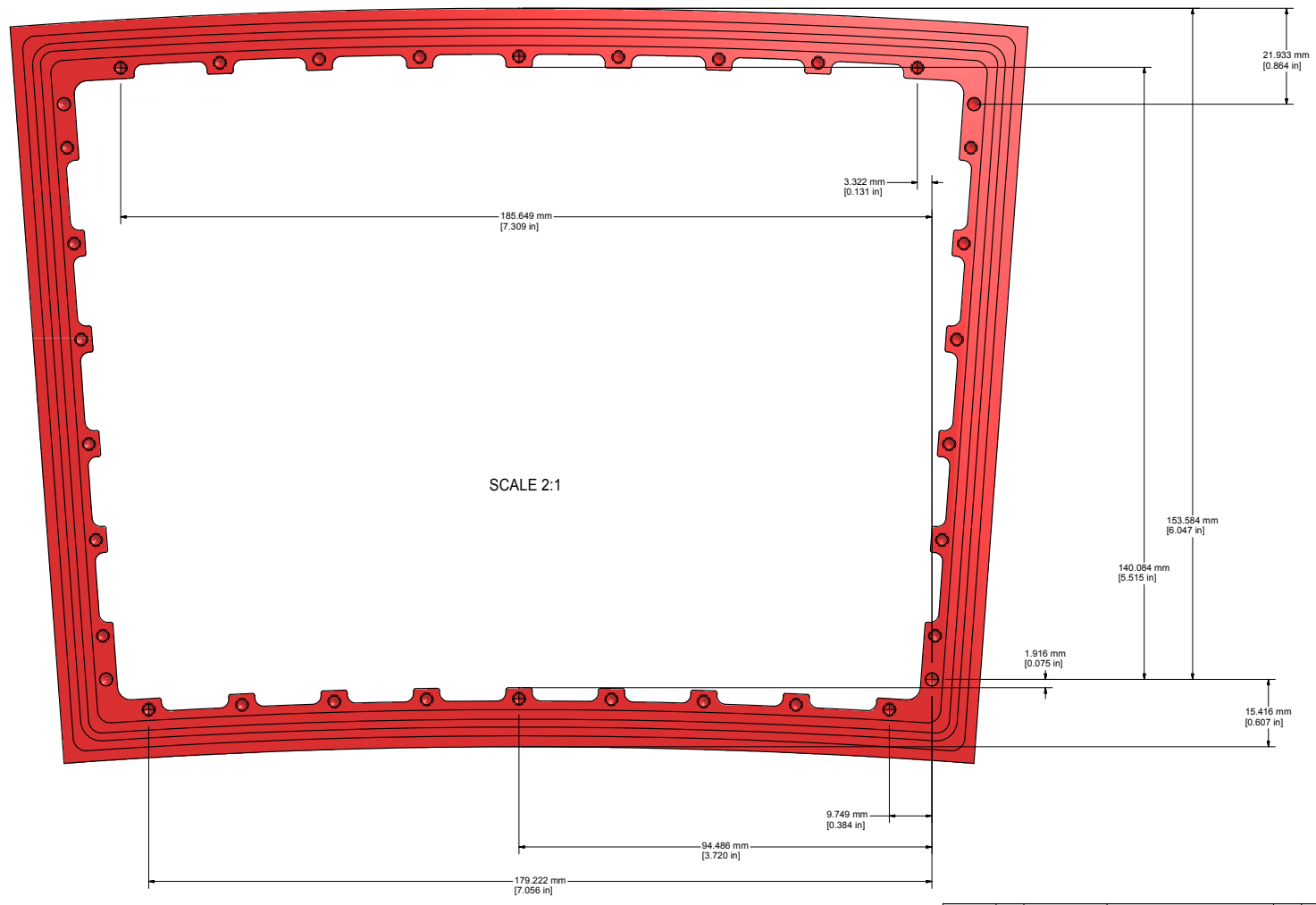
ITEM	DWG. NO.	DESCRIPTION	G1	G2	G3	REMARKS	REV.
			QUANTITY				
CR-1	6080-164	LP1 Endplate 3_LP1-Backframe-2					

PRINT DISTR: CR-1 PLOT DATE: 4/11/2011 CAD FILE NAME: 6080-164.idw	<b>CORNELL UNIVERSITY</b> LABORATORY FOR ELEMENTARY PARTICLES PHYSICS <b>LEPP</b> FLOYD R. NEWMAN LABORATORY ITHACA, NY 14853	CORNELL UNIVERSITY Floyd R. Newman Laboratory Ithaca, NY 14853
UNLESS OTHERWISE SPECIFIED: DIMENSIONS ARE IN INCHES. TOLERANCES ON: .5 ± .02 .00 ± .010 .000 ± .005 FRACTIONS ± .002 ANGLES ± 10' ALL SURFACES ✓	DRAWN BY: TMK DRAWN FOR: DPP DATE: 3/29/2011 SCALE: D	6080-164 SH. NO. 8 OF 9



REVISIONS				
SYM.	ZONE	DESCRIPTION	DATE	APP.



This sheet shows reference measurements for surfaces, in the "y" dimension, for quality control.

ITEM	DWG. NO.	DESCRIPTION	QUANTITY			REMARKS	REV.
			G1	G2	G3		
PRINT DISTR.	PLOT DATE: 4/11/2011 CAD FILE NAME: 6080-164.idw						
CR-1	UNLESS OTHERWISE SPECIFIED: DIMENSIONS ARE IN INCHES: TOLERANCES ON: .5 ± .02 .00 ± .010 .000 ± .005 FRACTIONS ± .002 ANGLES ± 15' ALL SURFACES <input checked="" type="checkbox"/>	<b>CORNELL UNIVERSITY</b> LABORATORY FOR ELEMENTARY PARTICLE PHYSICS <b>LEPP</b>	CORNELL UNIVERSITY Floyd R. Newman Laboratory Ithaca, NY 14853				
		LP1 Endplate 3_LP1-Backframe-2					
CHECKED BY:	DRAWN BY: TMK	DRAWN FOR: DPP	DATE: 3/29/2011	SCALE: D	6080-164	REV.	
APPROVED BY:					SH. NO. 9 OF 9		